

## ANNEX C - ADDITIONAL DATA PLOT DISPLAY OPTIONS AND COMPOSITE PLOTS

C1. Data plots for earth resistance survey 171-4 filtered as in para 4.1.3 and using additional display options are given in Figures C1.1 to C1.46. Each data set is provided in pairs; the first plot without grid lines in order to present an uninterrupted picture, the second plot with grid lines in order to aid with orientation.

### C1.1. Linear Display.

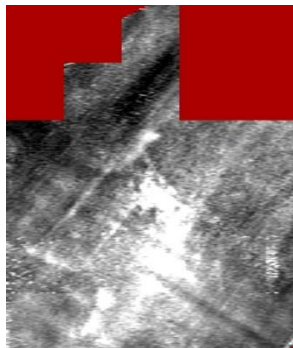


Figure C1.1a: Filtered data #1, ext greyscale

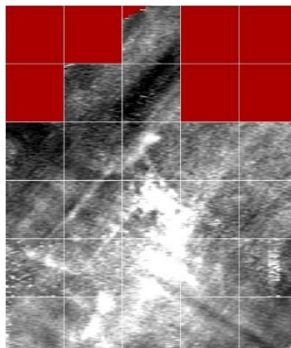


Figure C1.1b: Filtered data #1, ext greyscale

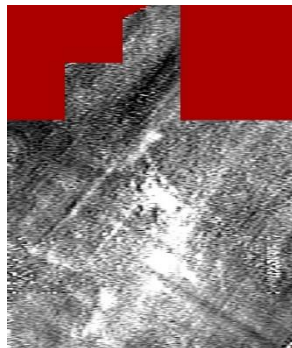


Figure C1.2a: Filtered data #2, ext greyscale

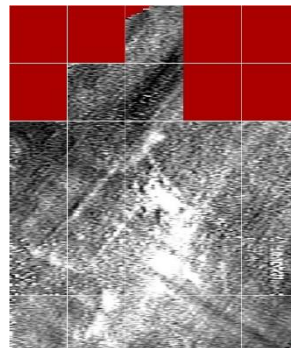


Figure C1.2b: Filtered data #2, ext greyscale

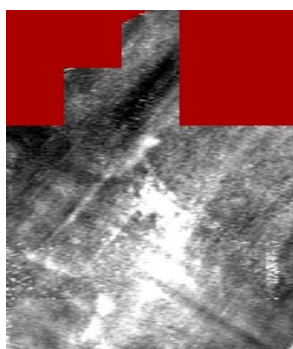


Figure C1.3a: Filtered data #1, greyscale 64

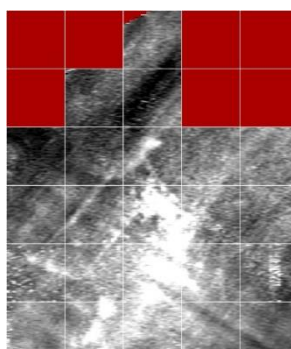


Figure C1.3b: Filtered data #1, greyscale 64

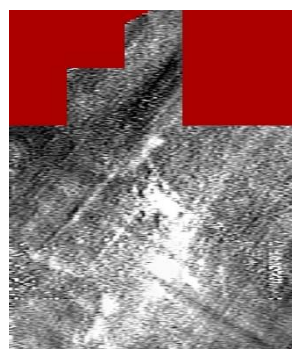


Figure C1.4a: Filtered data #2, greyscale 64

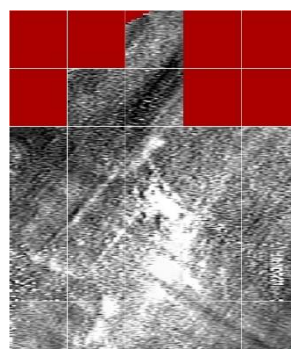


Figure C1.4b: Filtered data #2, greyscale 64

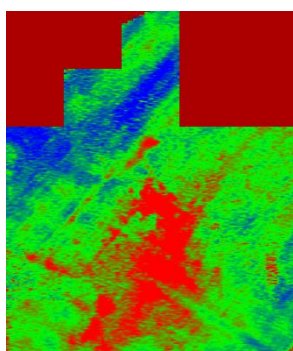


Figure C1.5a: Filtered data #1, RGB

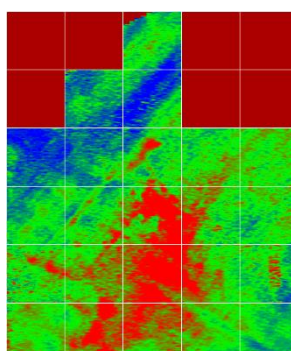


Figure C1.5b: Filtered data #1, RGB

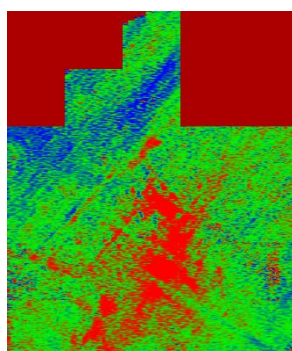


Figure C1.6a: Filtered data #2, RGB

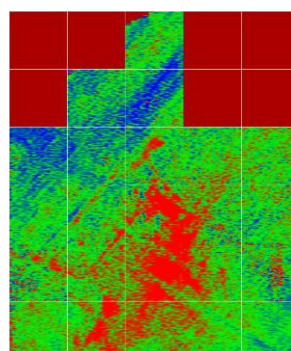


Figure C1.6b: Filtered data #2, RGB



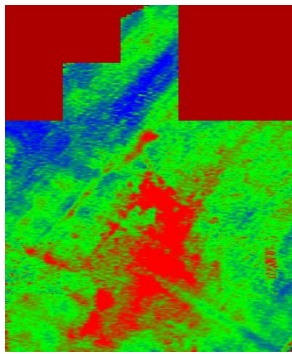


Figure C1.7a: Filtered data #1, ext RGB

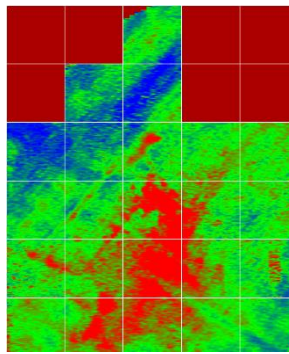


Figure C1.7b: Filtered data #1, ext RGB

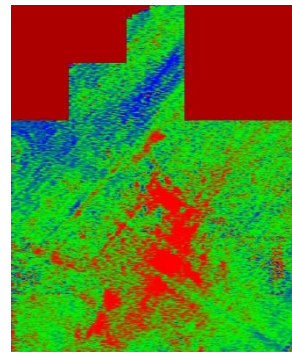


Figure C1.8a: Filtered data #2, ext RGB

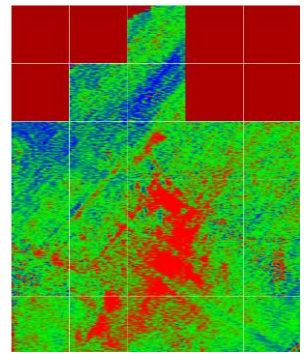


Figure C1.8b: Filtered data #2, ext RGB

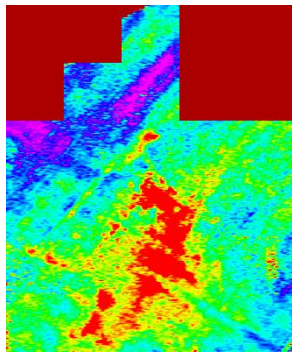


Figure C1.9a: Filtered data #1, rainbow

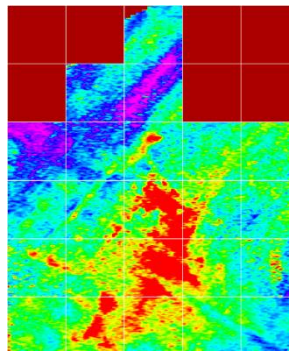


Figure C1.9b: Filtered data #1, rainbow

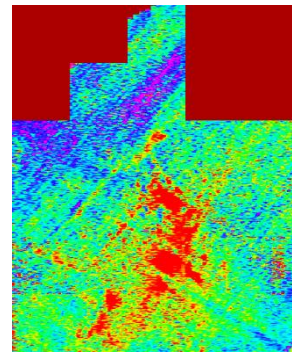


Figure C1.10a: Filtered data #2, rainbow

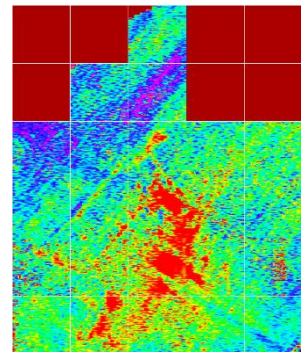


Figure C1.10b: Filtered data #2, rainbow

## C1.2. Non-Linear Display.

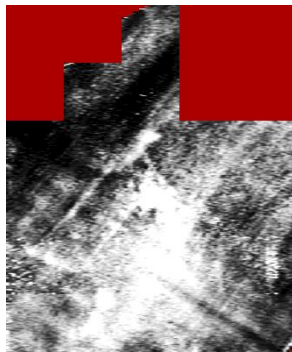


Figure C1.11a: Filtered data #1, greyscale

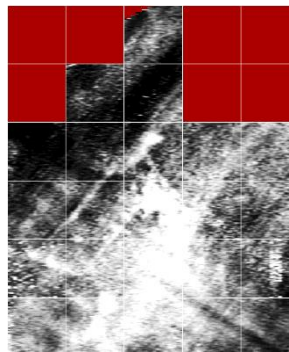


Figure C1.11b: Filtered data #1, greyscale

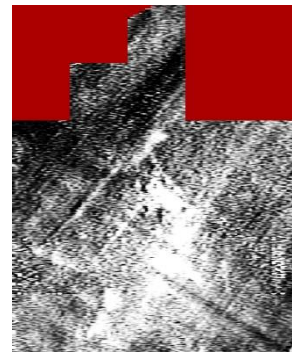


Figure C1.12a: Filtered data #2, greyscale

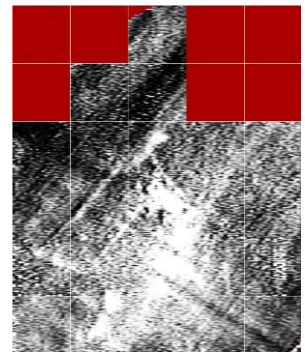


Figure C1.12b: Filtered data #2, greyscale

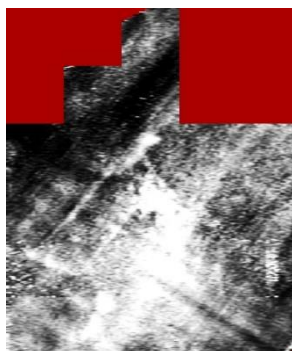


Figure C1.13a: Filtered data #1, ext greyscale

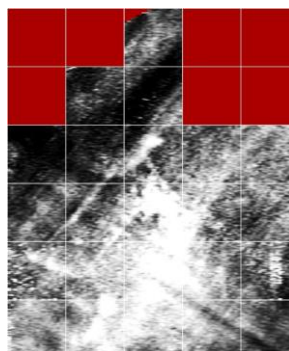


Figure C1.13b: Filtered data #1, ext greyscale

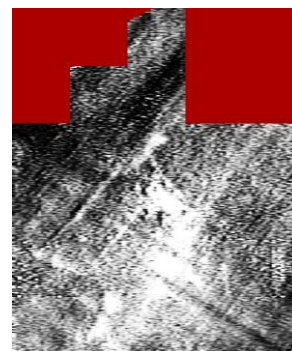


Figure C1.14a: Filtered data #2, ext greyscale

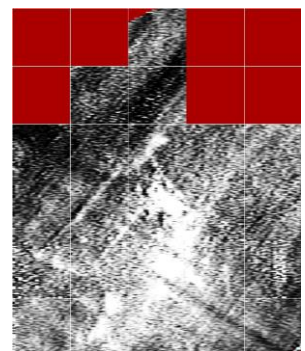


Figure C1.14b: Filtered data #2, ext greyscale



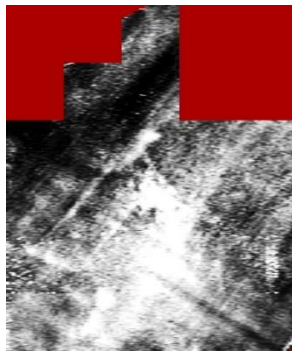


Figure C1.15a: Filtered data #1, greyscale 64

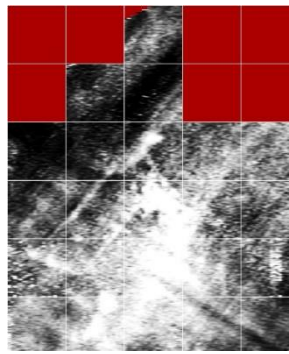


Figure C1.15b: Filtered data #1, greyscale 64

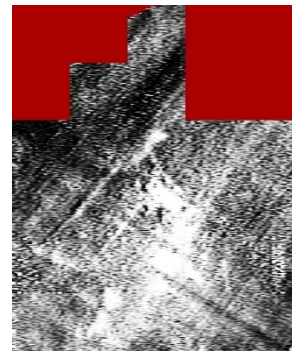


Figure C1.16a: Filtered data #2, greyscale 64

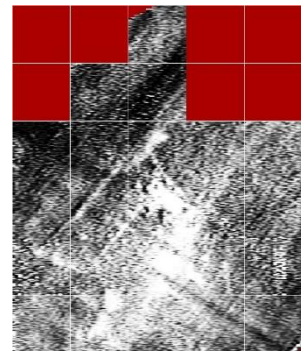


Figure C1.16b: Filtered data #2, greyscale 64

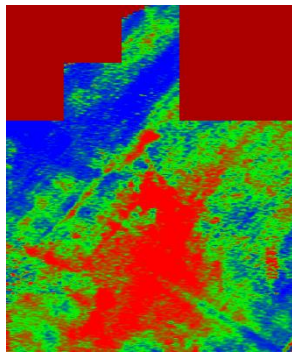


Figure C1.17a: Filtered data #1, RGB

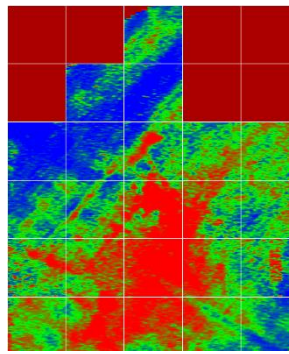


Figure C1.17b: Filtered data #1, RGB

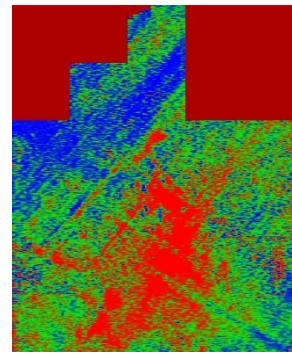


Figure C1.18a: Filtered data #2, RGB

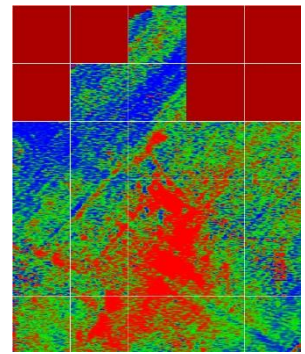


Figure C1.18b: Filtered data #2, RGB

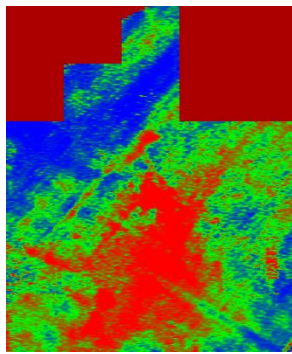


Figure C1.19a: Filtered data #1, ext RGB

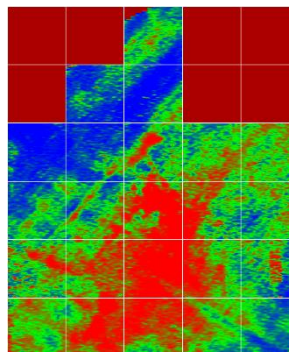


Figure C1.19b: Filtered data #1, ext RGB

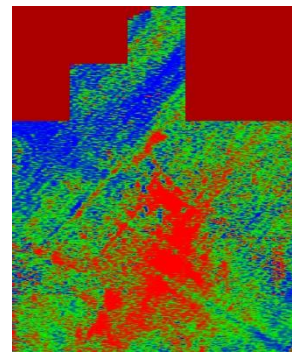


Figure C1.20a: Filtered data #2, ext RGB

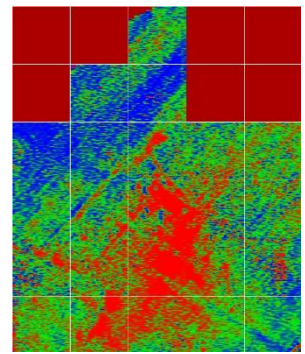


Figure C1.20b: Filtered data #2, ext RGB

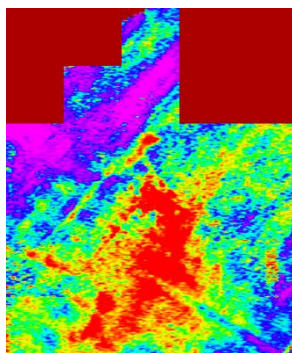


Figure C1.21a: Filtered data #1, rainbow

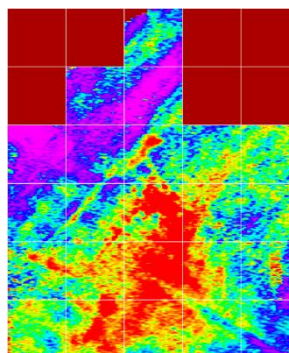


Figure C1.21b: Filtered data #1, rainbow

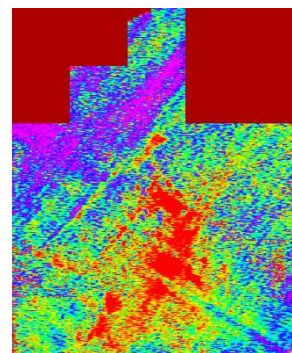


Figure C1.22a: Filtered data #2, rainbow

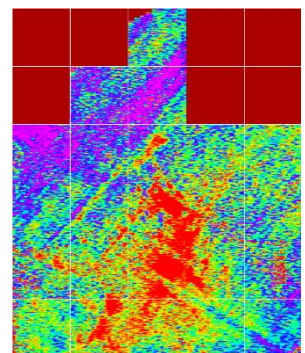


Figure C1.22b: Filtered data #2, rainbow



**C1.3. Relief Plot Display.** The virtual light source is at 30° elevation and 135° azimuth.

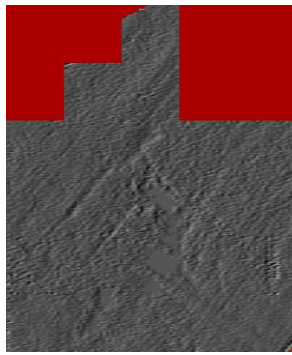


Figure C1.23a: Filtered data #1, greyscale

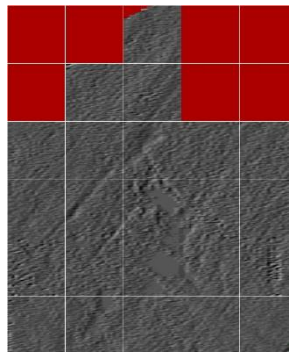


Figure C1.23b: Filtered data #1, greyscale

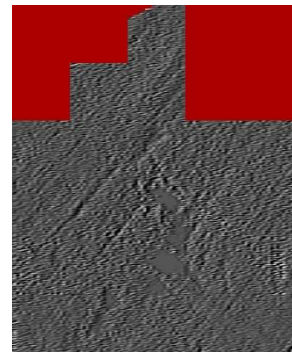


Figure C1.24a: Filtered data #2, greyscale

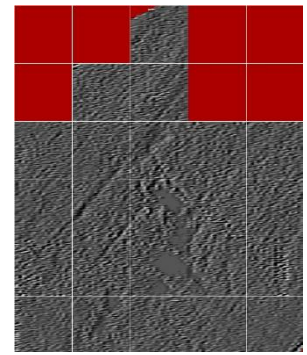


Figure C1.24b: Filtered data #2, greyscale

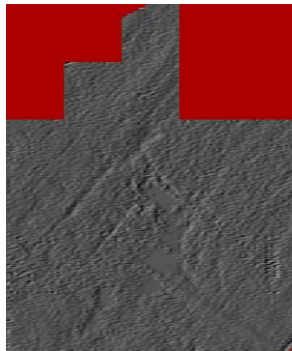


Figure C1.25a: Filtered data #1, ext greyscale

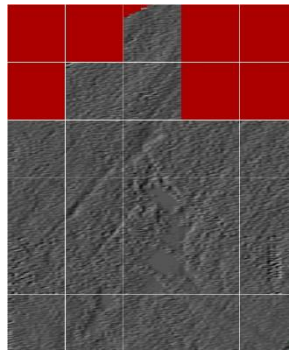


Figure C1.25b: Filtered data #1, ext greyscale

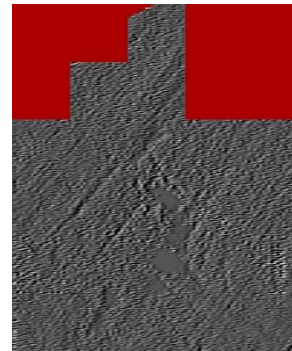


Figure C1.26a: Filtered data #2, ext greyscale

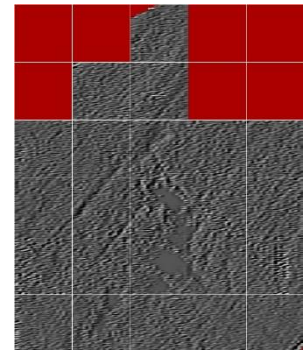


Figure C1.26b: Filtered data #2, ext greyscale

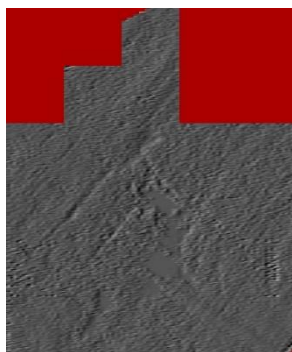


Figure C1.27a: Filtered data #1, greyscale 64

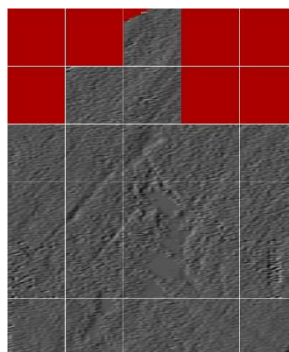


Figure C1.27b: Filtered data #1, greyscale 64

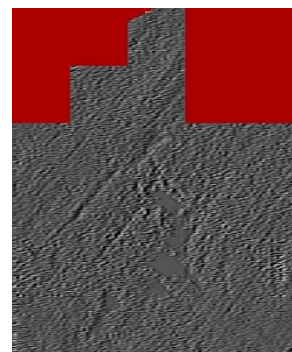


Figure C1.28a: Filtered data #2, greyscale 64

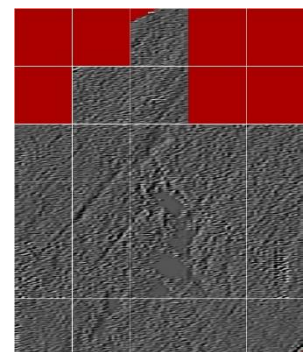


Figure C1.28b: Filtered data #2, greyscale 64

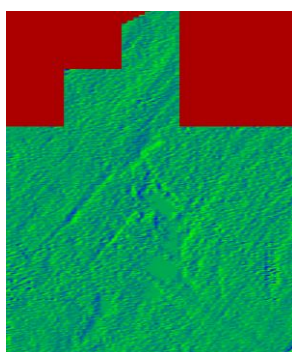


Figure C1.29a: Filtered data #1, RGB

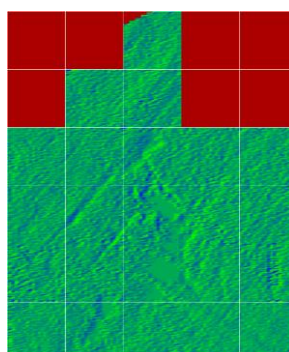


Figure C1.29b: Filtered data #1, RGB

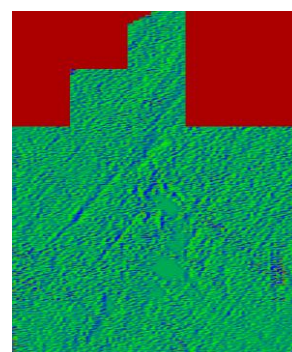


Figure C1.30a: Filtered data #2, RGB

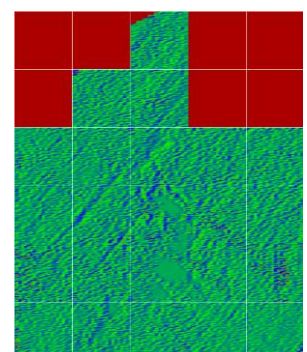


Figure C1.30b: Filtered data #2, RGB



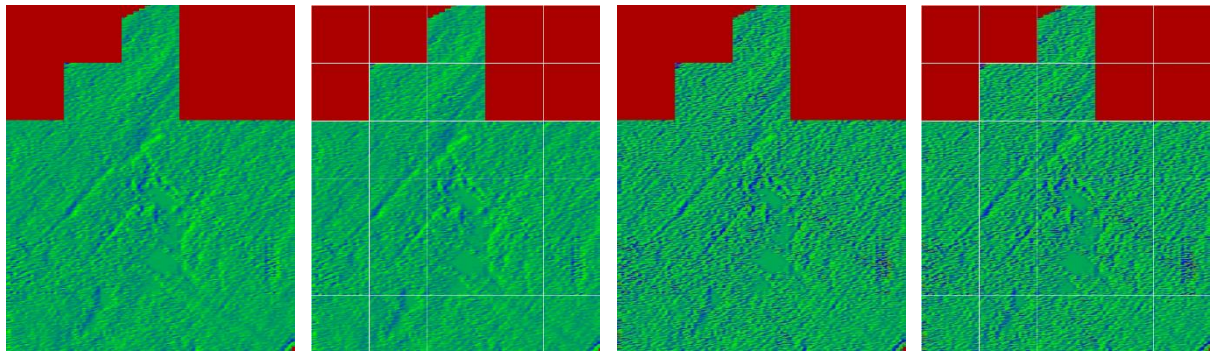


Figure C1.31a: Filtered data #1, ext RGB    Figure C1.31b: Filtered data #1, ext RGB    Figure C1.32a: Filtered data #2, ext RGB    Figure C1.32b: Filtered data #2, ext RGB

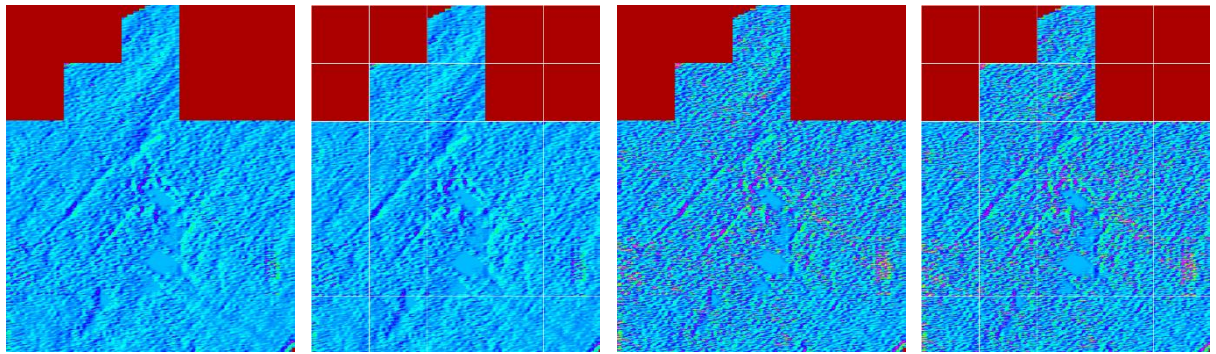


Figure C1.33a: Filtered data #1, rainbow    Figure C1.33b: Filtered data #1, rainbow    Figure C1.34a: Filtered data #2, rainbow    Figure C1.34b: Filtered data #2, rainbow

**C1.4. Relief Plot Display.** The virtual light source is at 30° elevation and 315° azimuth.

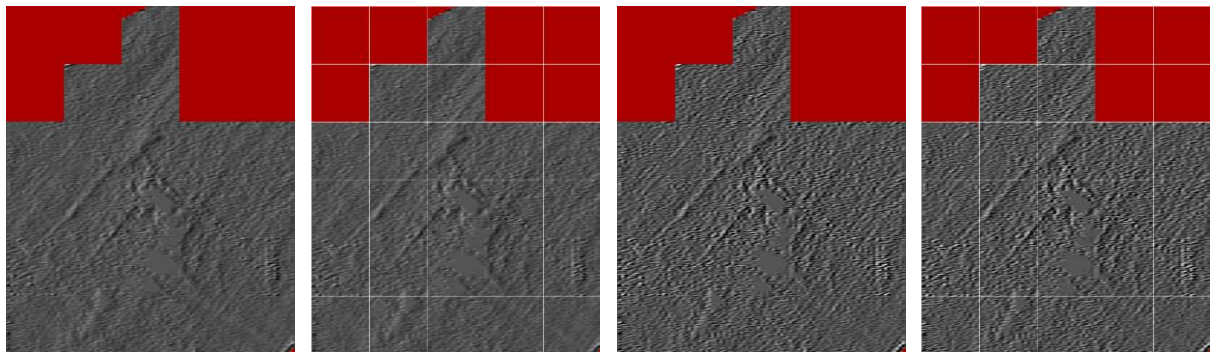


Figure C1.35a: Filtered data #1, greyscale    Figure C1.35b: Filtered data #1, greyscale    Figure C1.36a: Filtered data #2, greyscale    Figure C1.36b: Filtered data #2, greyscale

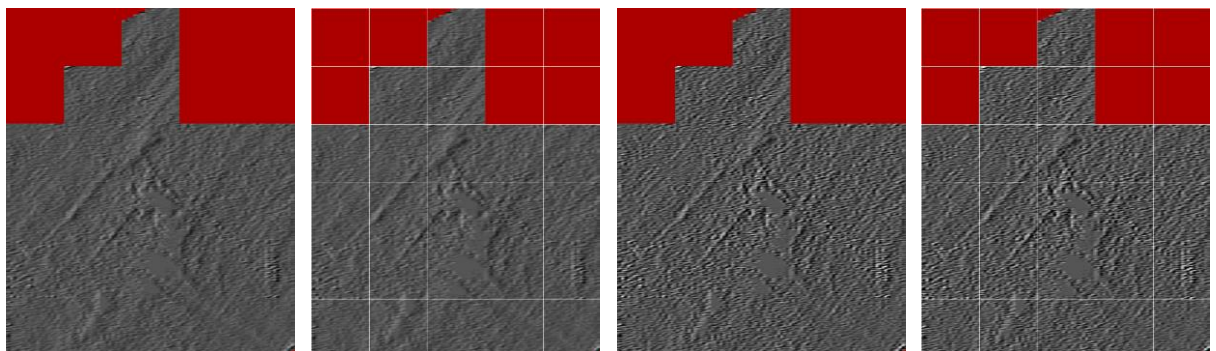


Figure C1.37a: Filtered data #1, ext greyscale    Figure C1.37b: Filtered data #1, ext greyscale    Figure C1.38a: Filtered data #2, ext greyscale    Figure C1.38b: Filtered data #2, ext greyscale



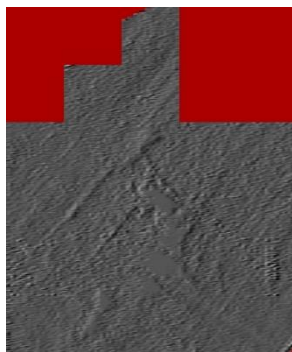


Figure C1.39a: Filtered data #1, greyscale 64

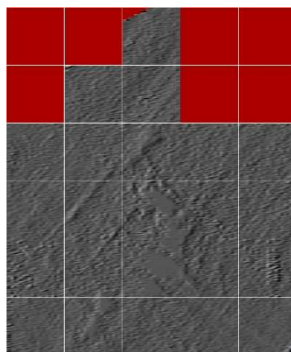


Figure C1.39b: Filtered data #1, greyscale 64

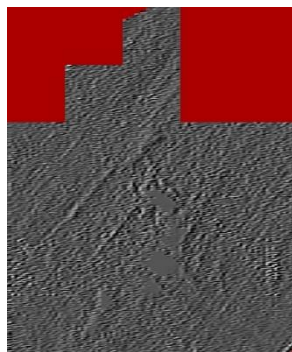


Figure C1.40a: Filtered data #2, greyscale 64

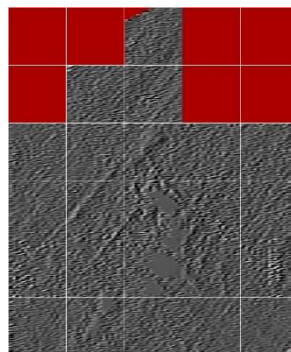


Figure C1.40b: Filtered data #2, greyscale 64

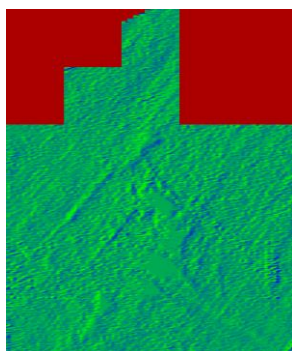


Figure C1.41a: Filtered data #1, RGB

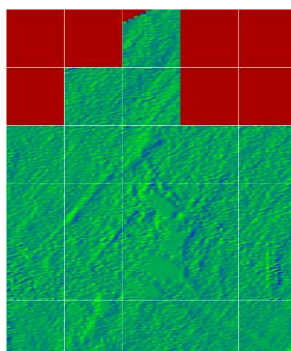


Figure C1.41b: Filtered data #1, RGB

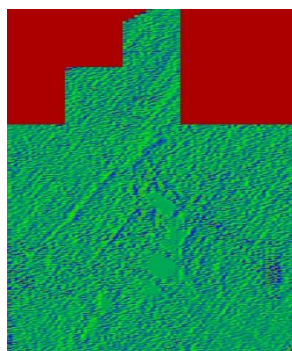


Figure C1.42a: Filtered data #2, RGB

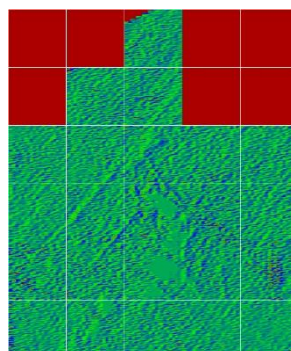


Figure C1.42b: Filtered data #2, RGB

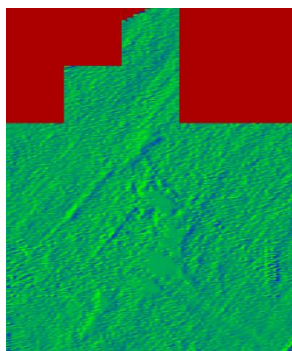


Figure C1.43a: Filtered data #1, ext RGB

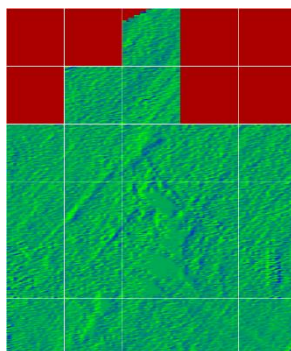


Figure C1.43b: Filtered data #1, ext RGB

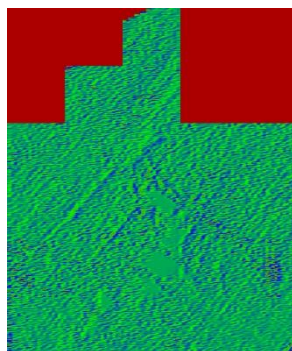


Figure C1.44a: Filtered data #2, ext RGB

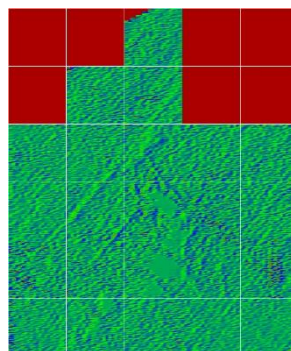


Figure C1.44b: Filtered data #2, ext RGB

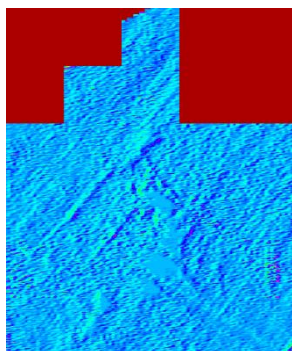


Figure C1.45a: Filtered data #1, rainbow

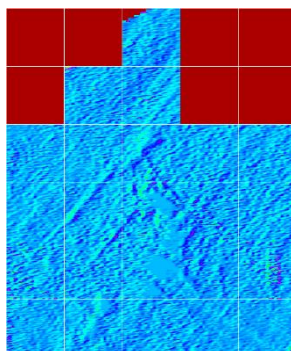


Figure C1.45b: Filtered data #1, rainbow

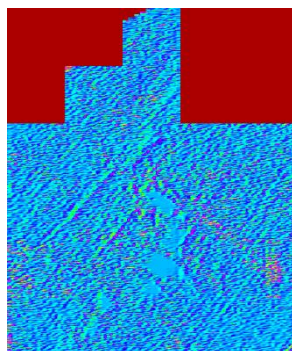


Figure C1.46a: Filtered data #2, rainbow

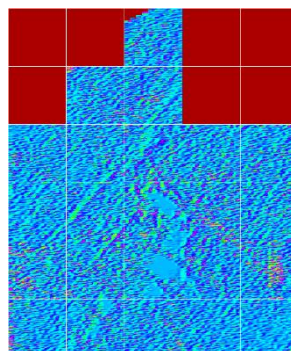


Figure C1.46b: Filtered data #2, rainbow



C2. Data plots for earth resistance survey 171-5 filtered as in para 4.2.3 and using additional display options are given in Figures C2.1 to C2.46. Each data set is provided in pairs; the first plot without grid lines in order to present an uninterrupted picture, the second plot with grid lines in order to aid with orientation.

### C2.1. Linear Display.

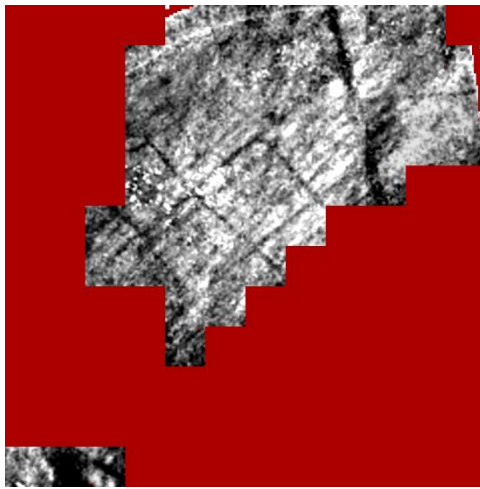


Figure C2.1a: Filtered data #1, ext greyscale

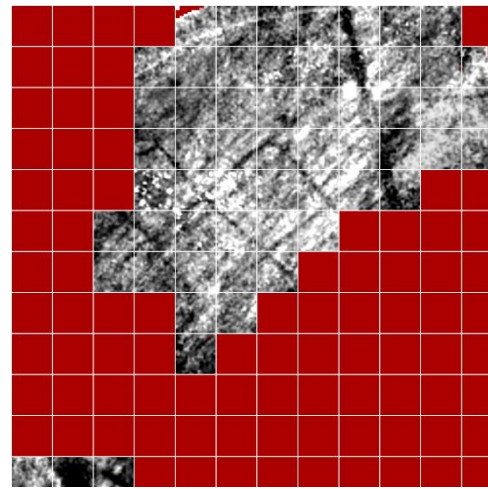


Figure C2.1b: Filtered data #1, ext greyscale

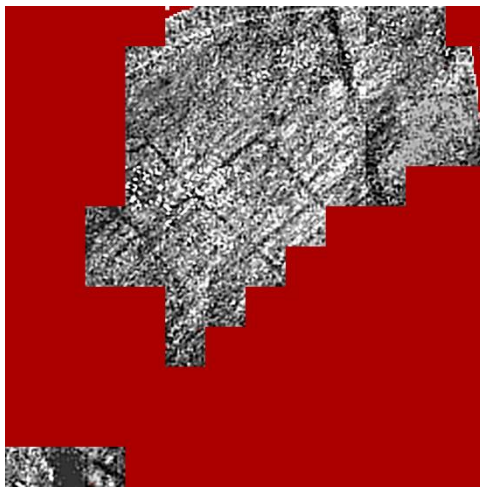


Figure C2.2a: Filtered data #2, ext greyscale

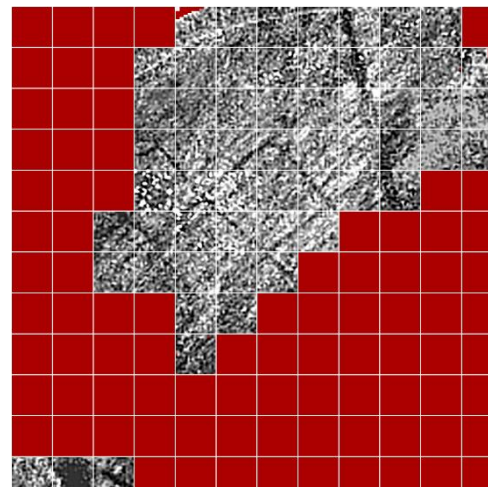


Figure C2.2b: Filtered data #2, ext greyscale

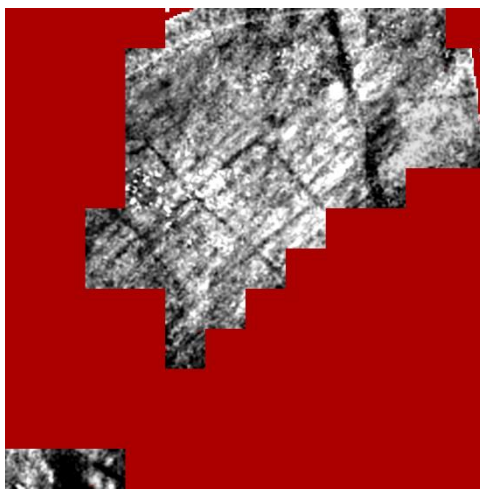


Figure C2.3a: Filtered data #1, greyscale 64

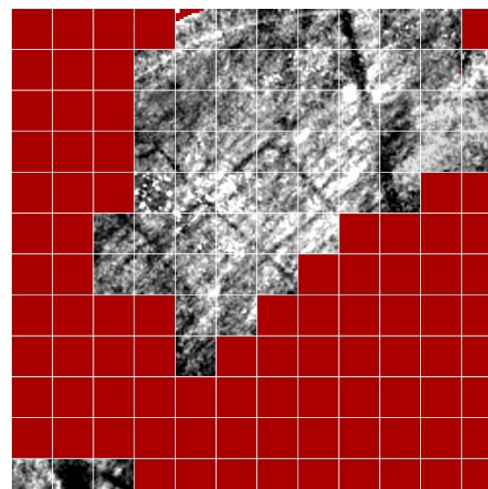


Figure C2.3b: Filtered data #1, greyscale 64



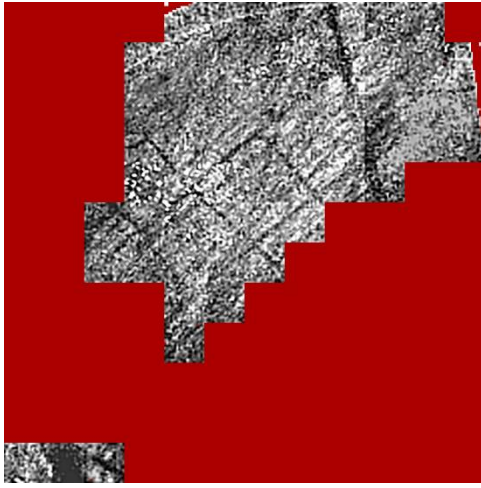


Figure C2.4a: Filtered data #2, greyscale 64

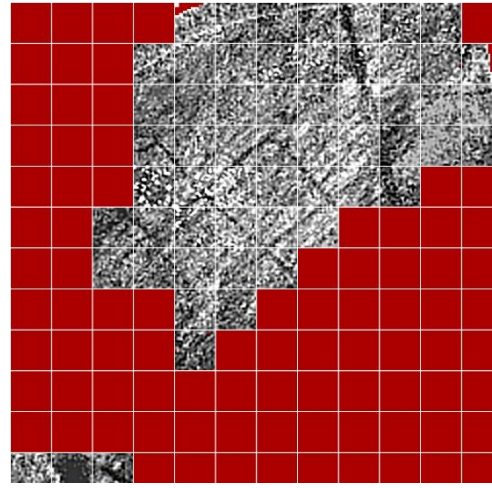


Figure C2.4b: Filtered data #2, greyscale 64

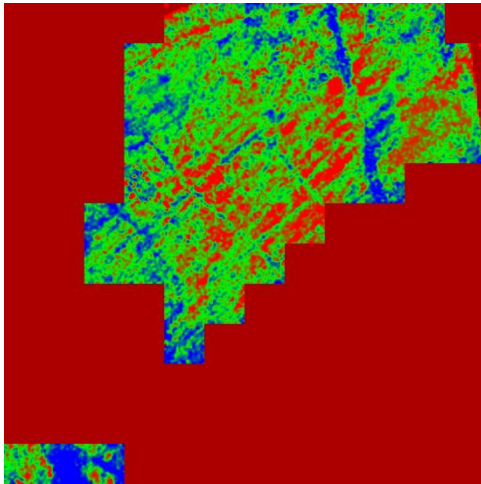


Figure C2.5a: Filtered data #1, RGB

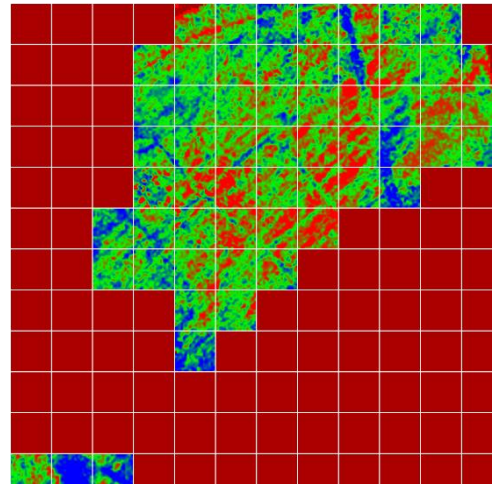


Figure C2.5b: Filtered data #1, RGB

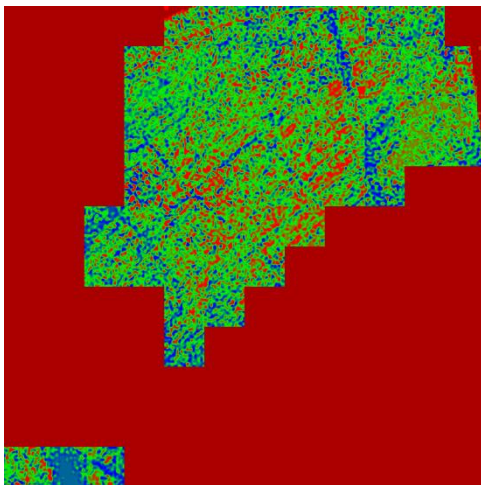


Figure C2.6a: Filtered data #2, RGB

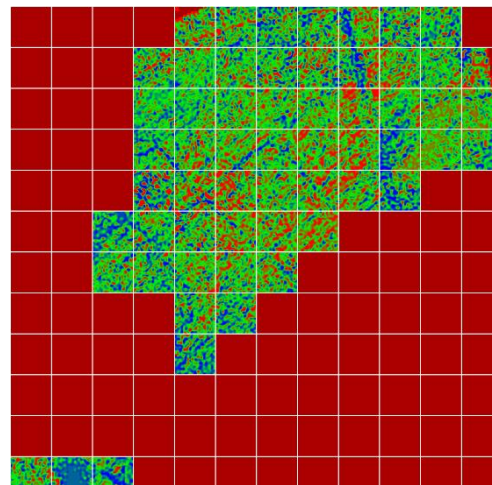


Figure C2.6b: Filtered data #2, RGB



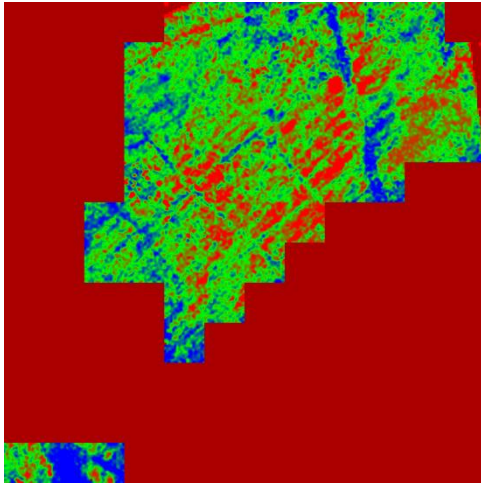


Figure C2.7a: Filtered data #1, ext RGB

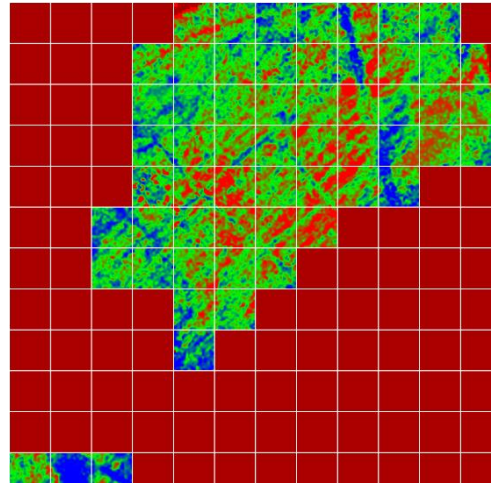


Figure C2.7b: Filtered data #1, ext RGB

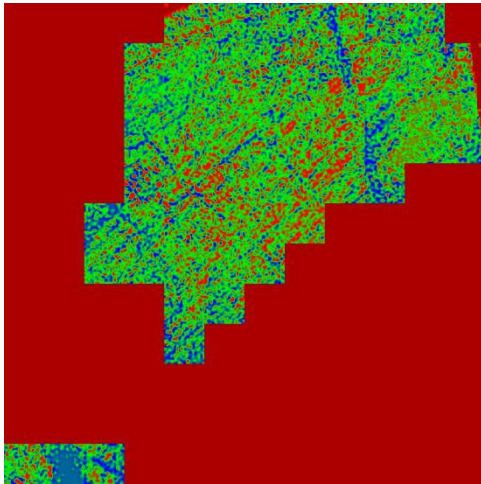


Figure C2.8a: Filtered data #2, ext RGB

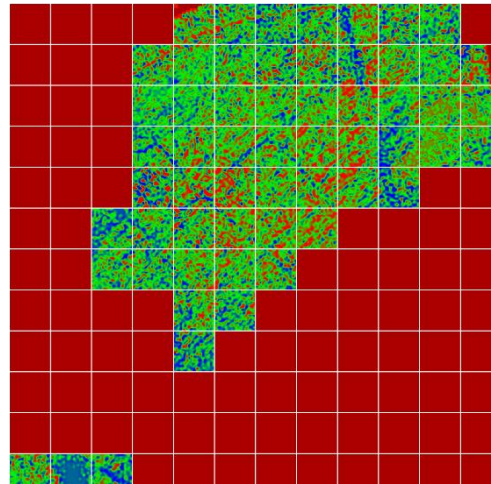


Figure C2.8b: Filtered data #2, ext RGB

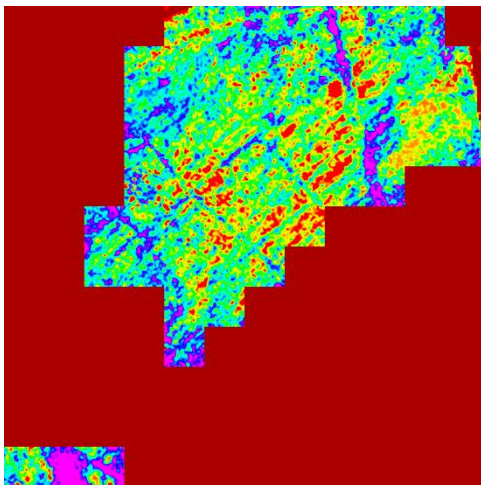


Figure C2.9a: Filtered data #1, rainbow

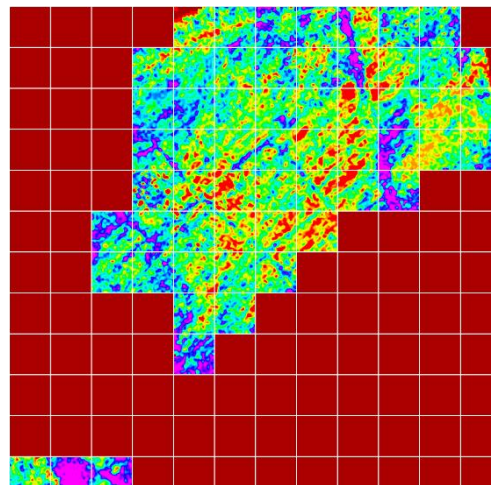


Figure C2.9b: Filtered data #1, rainbow



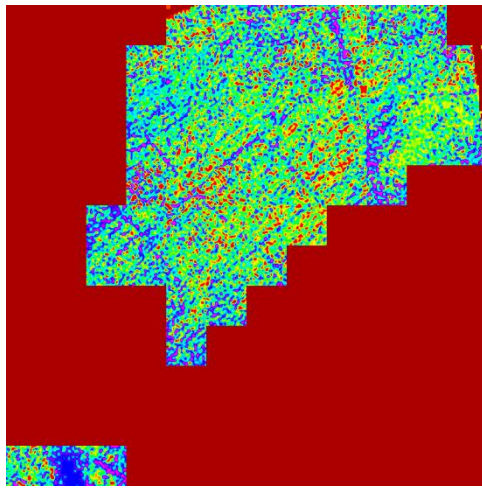


Figure C2.10a: Filtered data #2, rainbow

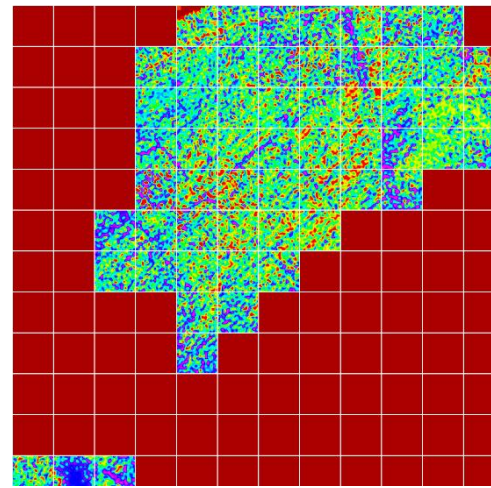


Figure C2.10b: Filtered data #2, rainbow

## C2.2. Non-Linear Display.

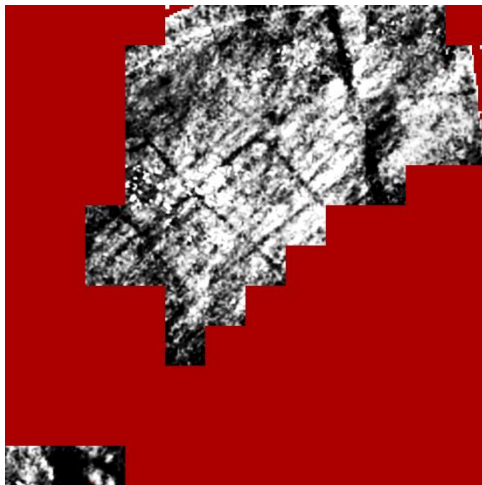


Figure C2.11a: Filtered data #1, greyscale

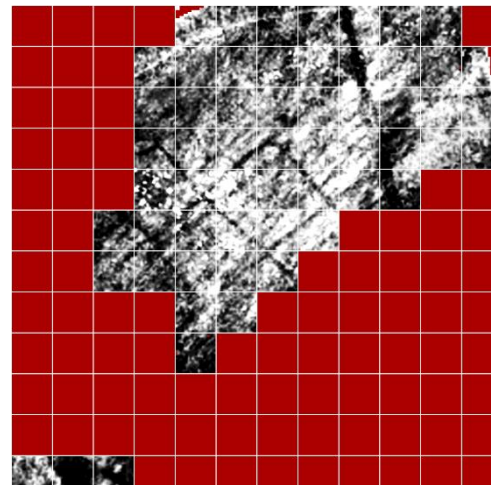


Figure C2.11b: Filtered data #1, greyscale

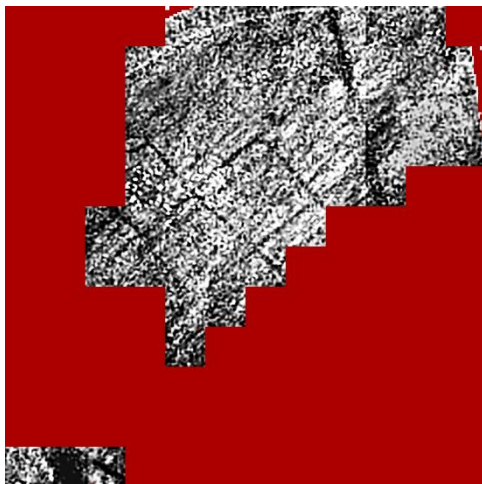


Figure C2.12a: Filtered data #2, greyscale

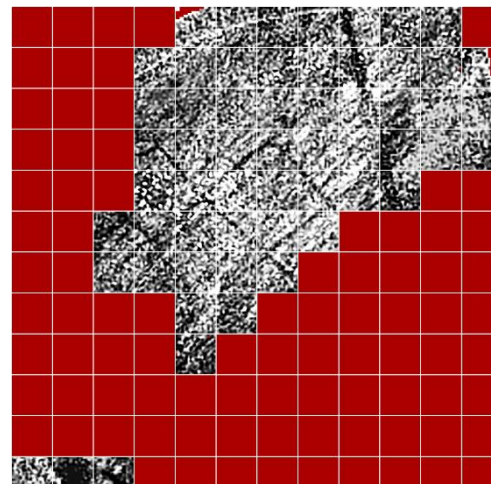


Figure C2.12b: Filtered data #2, greyscale



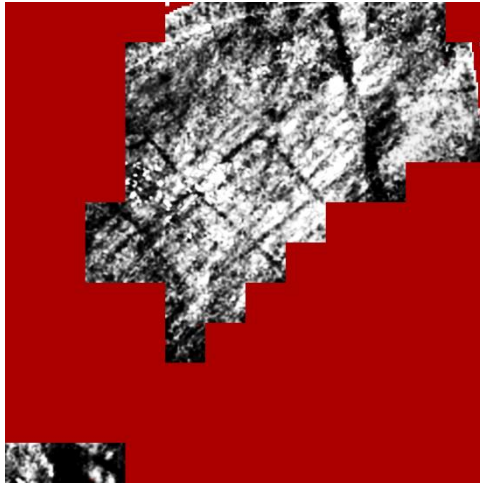


Figure C2.13a: Filtered data #1, ext greyscale

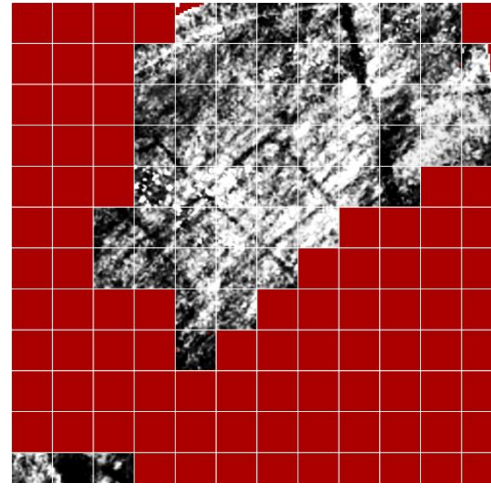


Figure C2.13b: Filtered data #1, ext greyscale

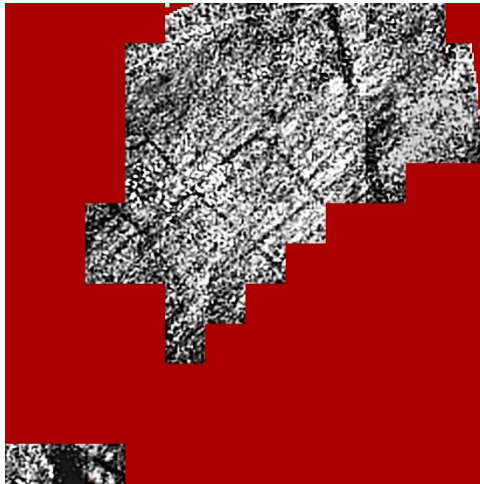


Figure C2.14a: Filtered data #2, ext greyscale

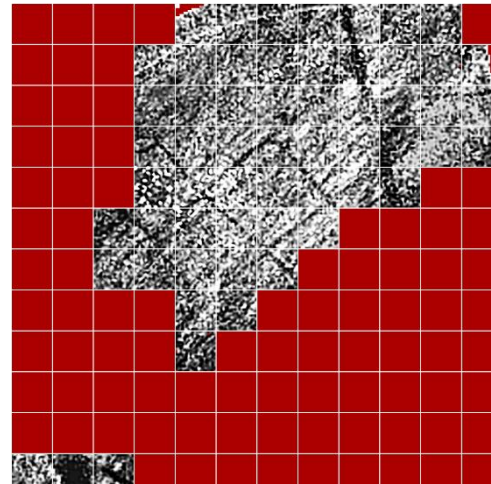


Figure C2.14b: Filtered data #2, ext greyscale

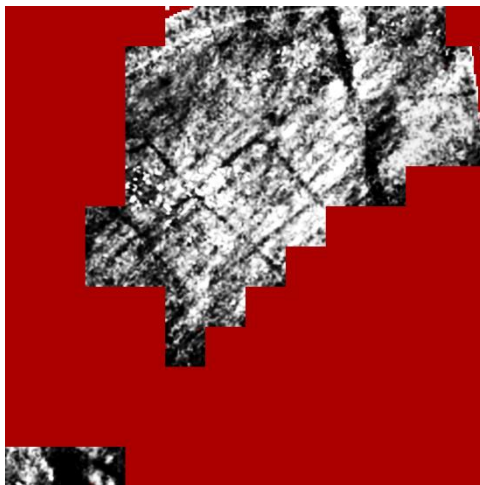


Figure C2.15a: Filtered data #1, greyscale 64

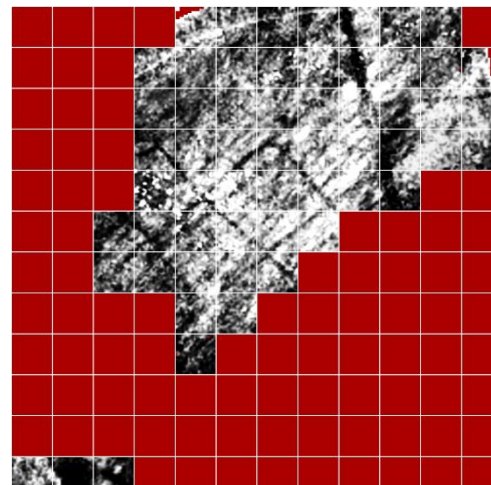


Figure C2.15b: Filtered data #1, greyscale 64



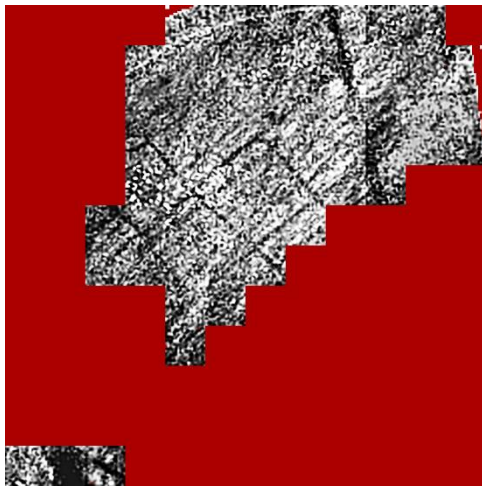


Figure C2.16a: Filtered data #2, greyscale 64

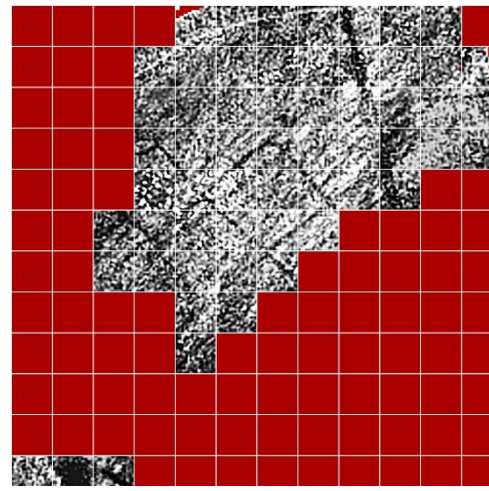


Figure C2.16b: Filtered data #2, greyscale 64

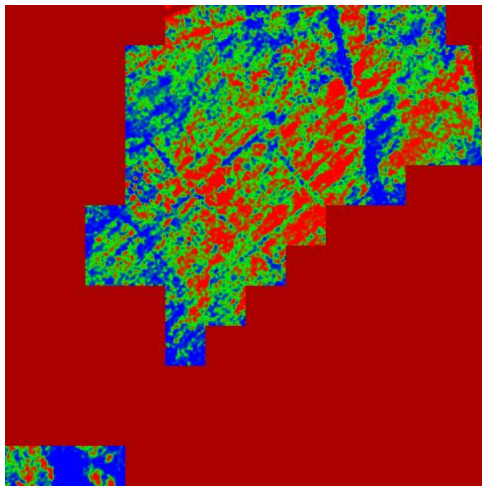


Figure C2.17a: Filtered data #1, RGB

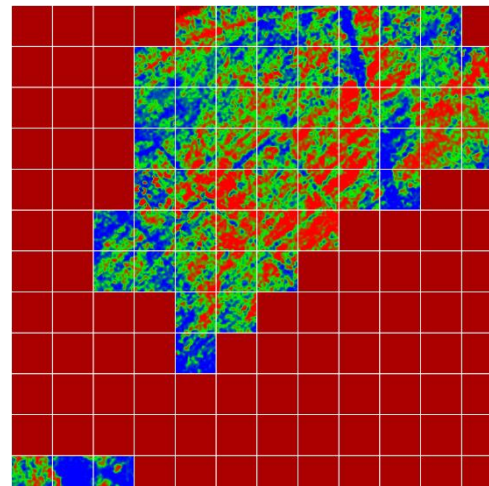


Figure C2.17b: Filtered data #1, RGB

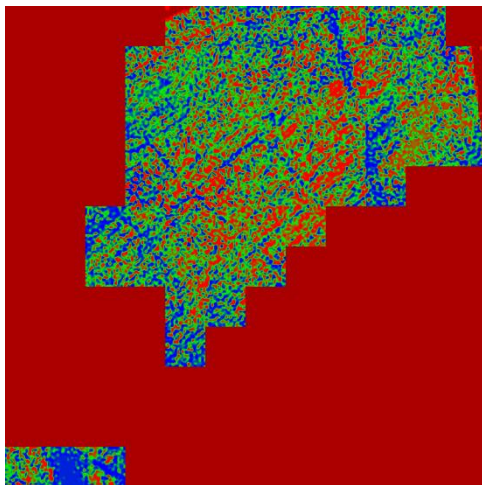


Figure C2.18a: Filtered data #2, RGB

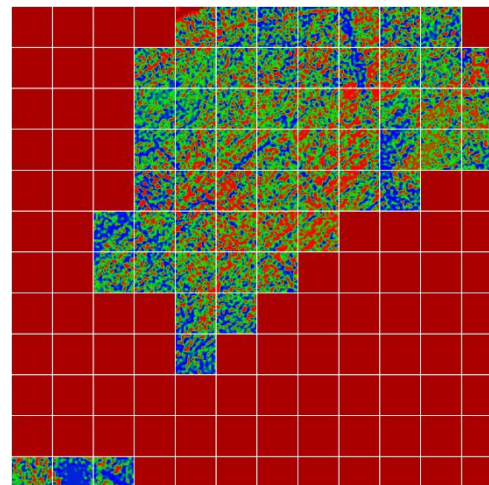


Figure C2.18b: Filtered data #2, RGB

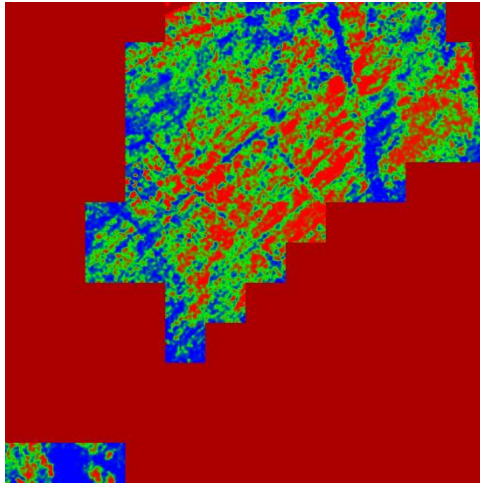


Figure C2.19a: Filtered data #1, ext RGB

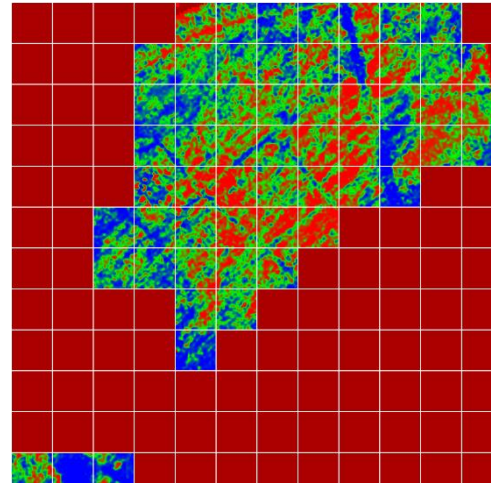


Figure C2.19b: Filtered data #1, ext RGB

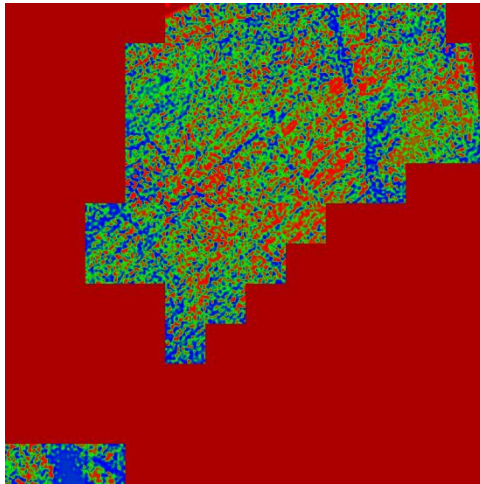


Figure C2.20a: Filtered data #2, ext RGB

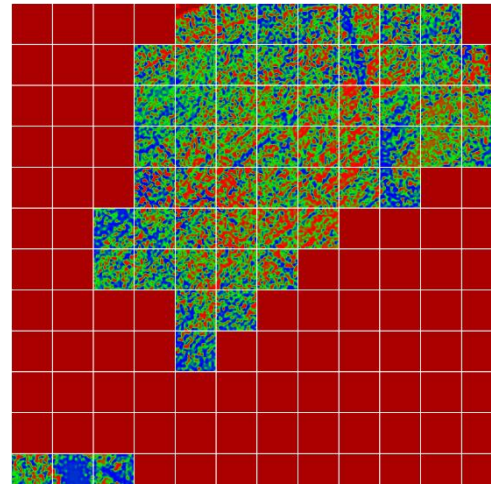


Figure C2.20b: Filtered data #2, ext RGB

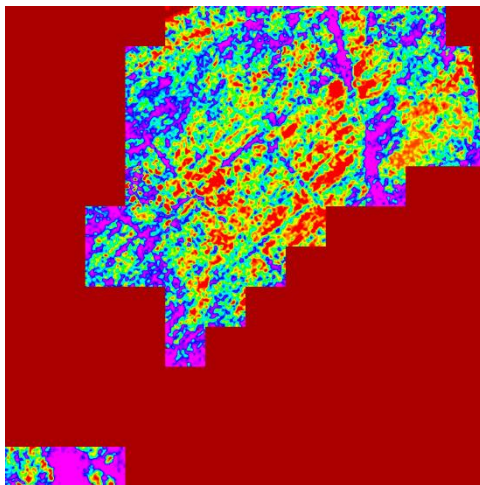


Figure C2.21a: Filtered data #1, rainbow

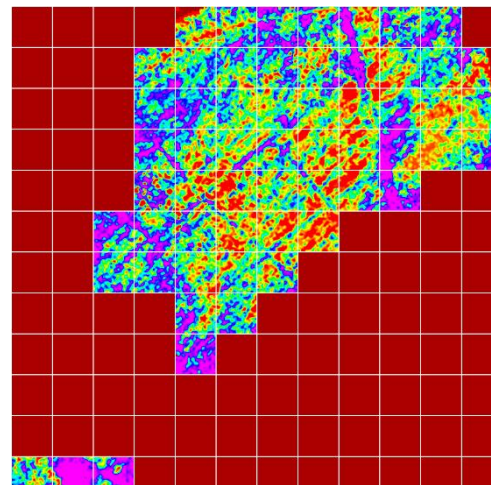


Figure C2.21b: Filtered data #1, rainbow



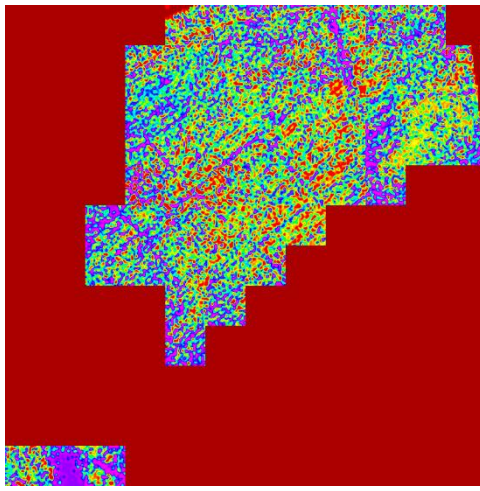


Figure C2.22a: Filtered data #2, rainbow

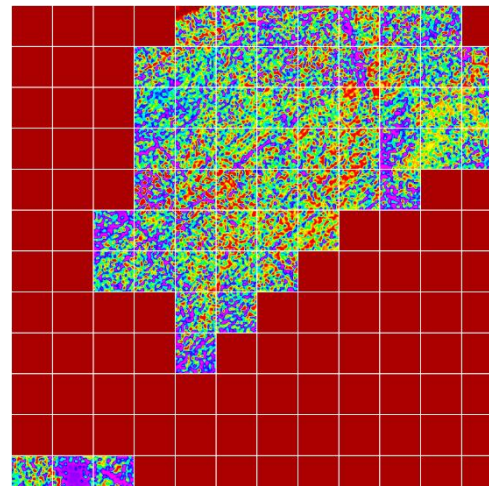


Figure C2.22b: Filtered data #2, rainbow

**C2.3. Relief Plot Display.** The virtual light source is at 30° elevation and 15° azimuth.

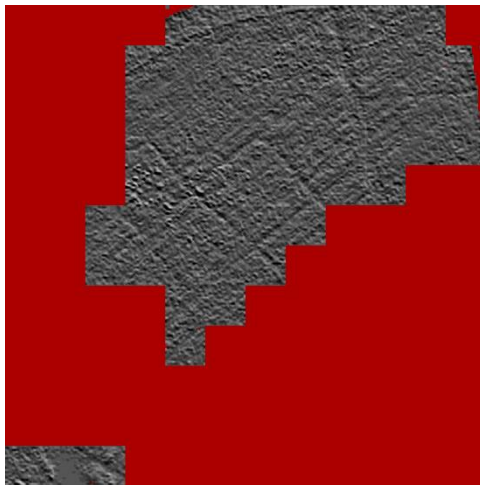


Figure C2.23a: Filtered data #1, greyscale

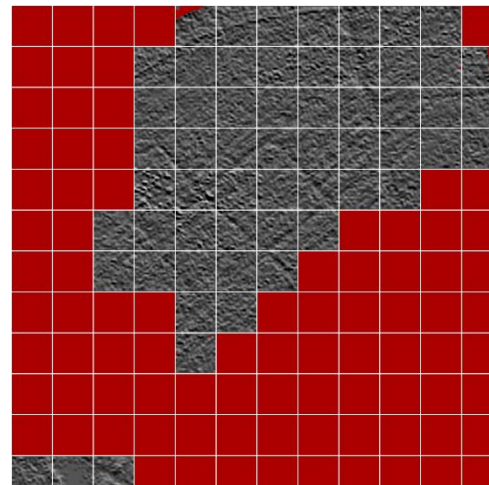


Figure C2.23b: Filtered data #1, greyscale

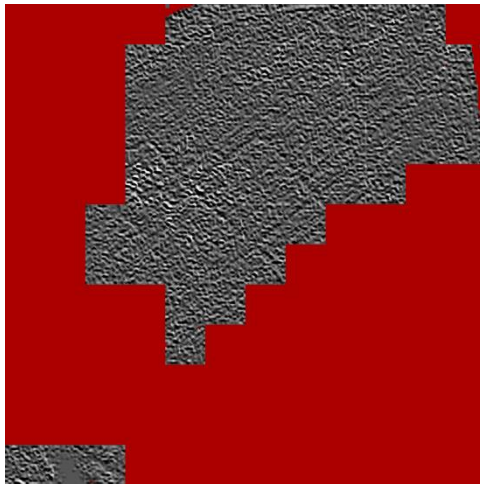


Figure C2.24a: Filtered data #2, greyscale

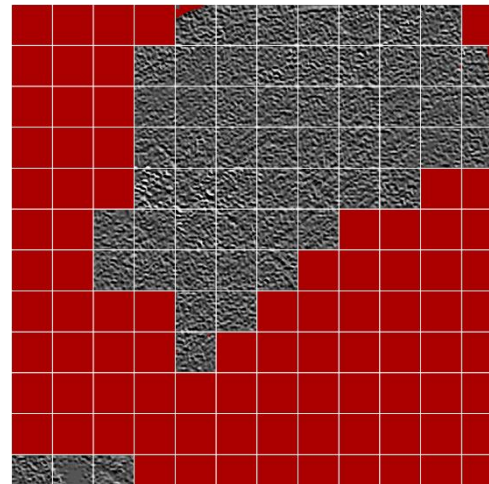


Figure C2.24b: Filtered data #2, greyscale

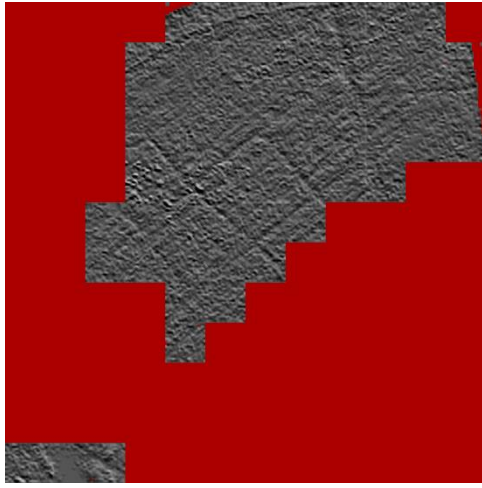


Figure C2.25a: Filtered data #1, ext greyscale

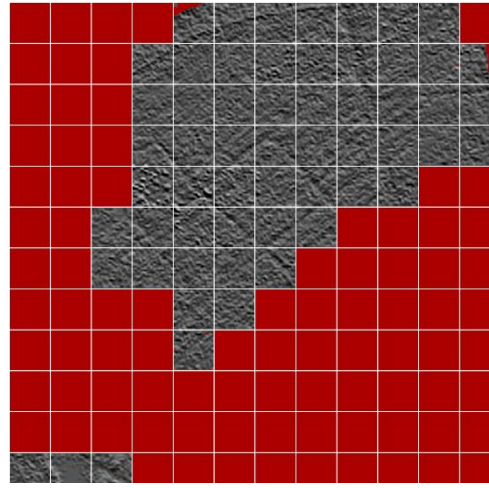


Figure C2.25b: Filtered data #1, ext greyscale

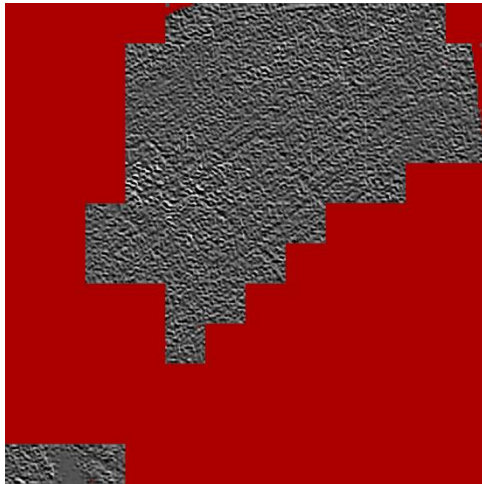


Figure C2.26a: Filtered data #2, ext greyscale

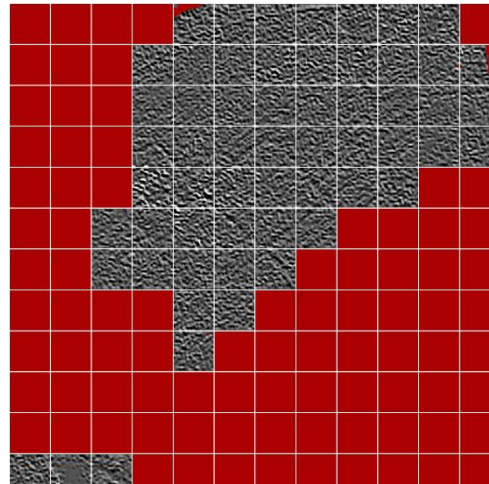


Figure C2.26b: Filtered data #2, ext greyscale

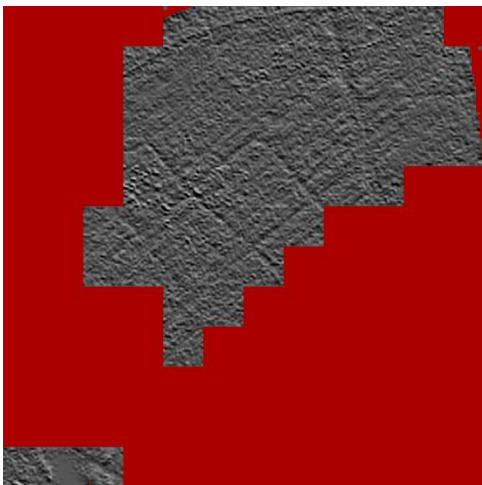


Figure C2.27a: Filtered data #1, greyscale 64

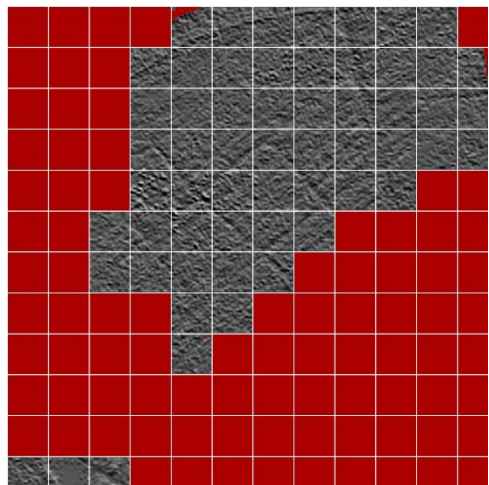


Figure C2.27b: Filtered data #1, greyscale 64



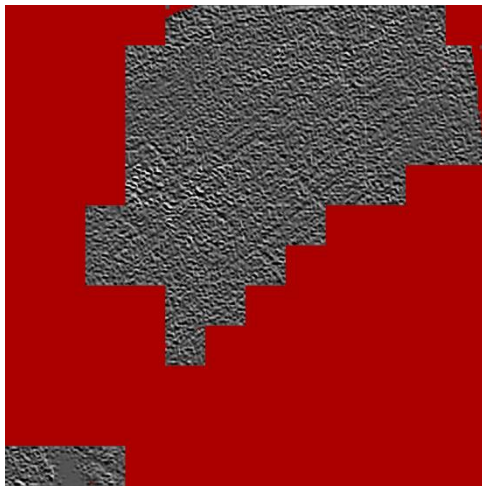


Figure C2.28a: Filtered data #2, greyscale 64

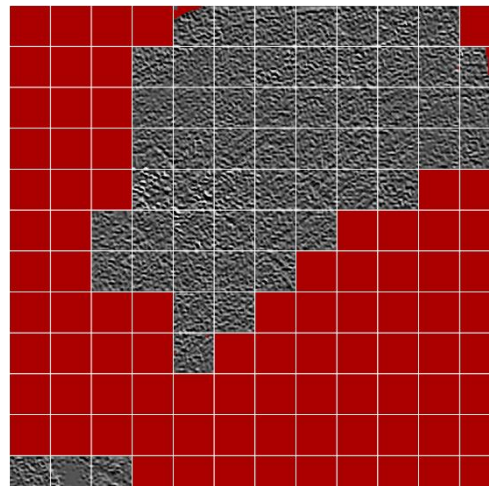


Figure C2.28b: Filtered data #2, greyscale 64

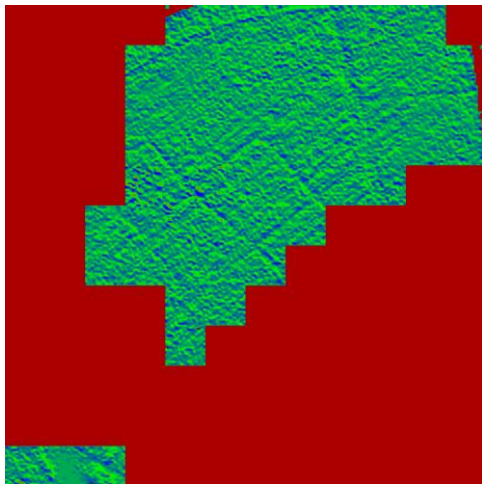


Figure C2.29a: Filtered data #1, RGB

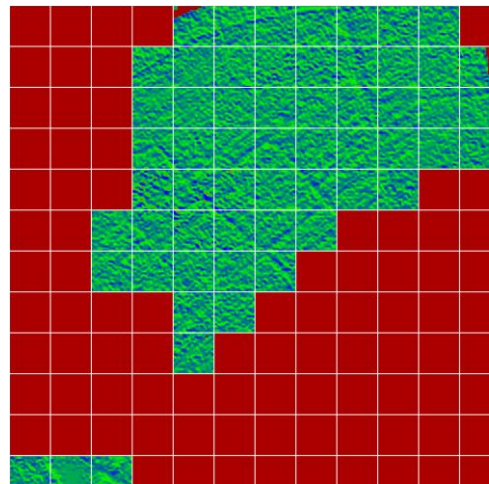


Figure C2.29b: Filtered data #1, RGB

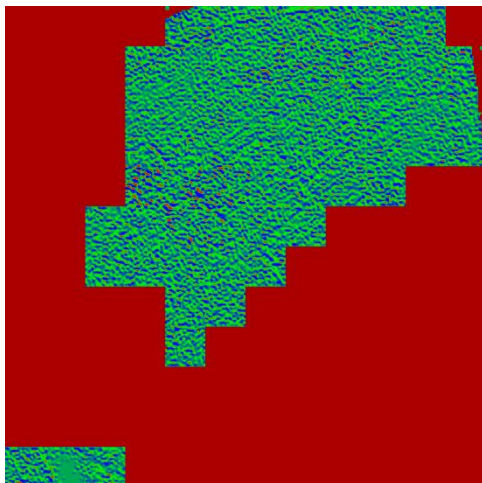


Figure C2.30a: Filtered data #2, RGB

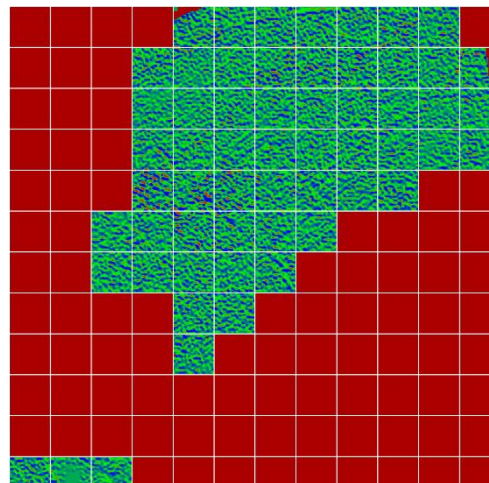


Figure C2.30b: Filtered data #2, RGB

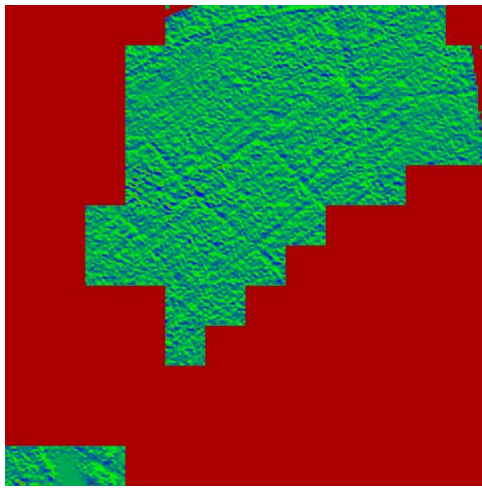


Figure C2.31a: Filtered data #1, ext RGB

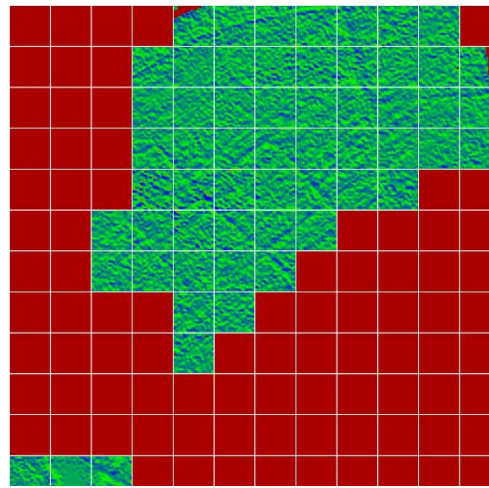


Figure C2.31b: Filtered data #1, ext RGB

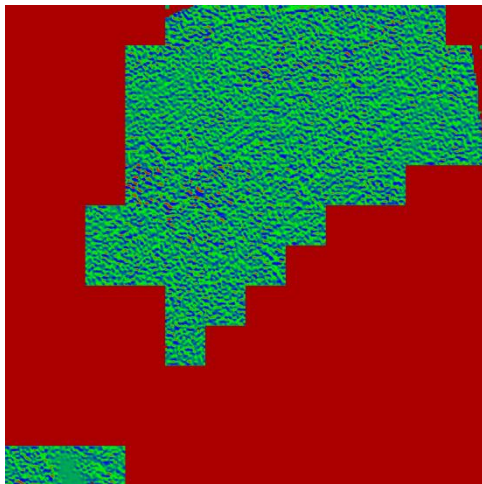


Figure C2.32a: Filtered data #2, ext RGB

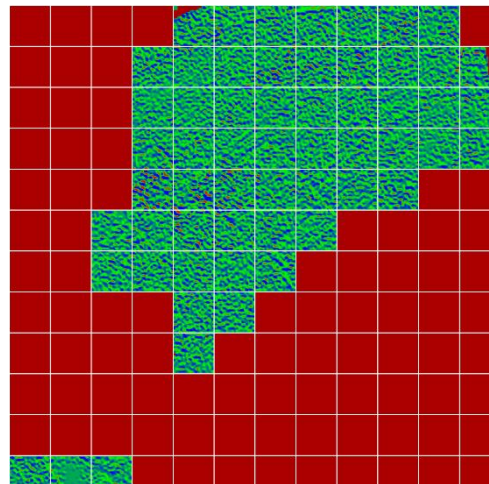


Figure C2.32b: Filtered data #2, ext RGB

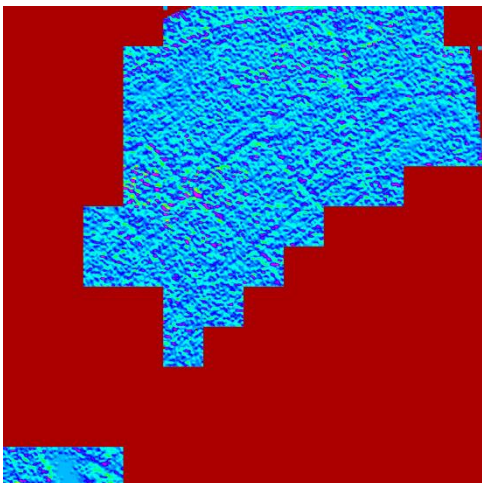


Figure C2.33a: Filtered data #1, rainbow

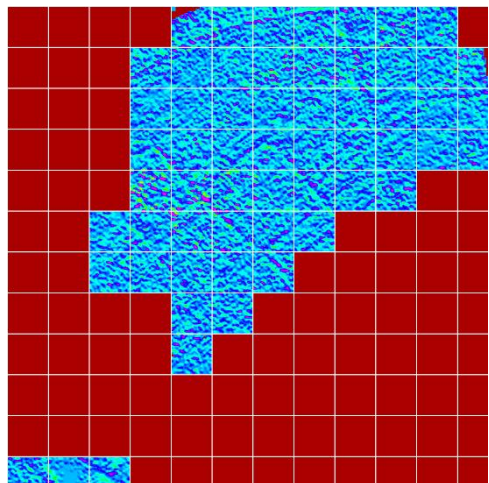


Figure C2.33b: Filtered data #1, rainbow



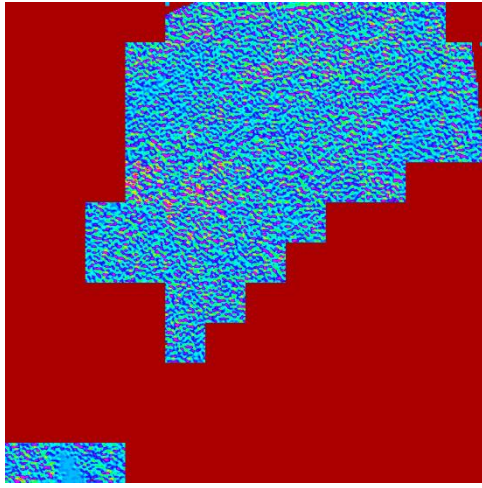


Figure C2.34a: Filtered data #2, rainbow

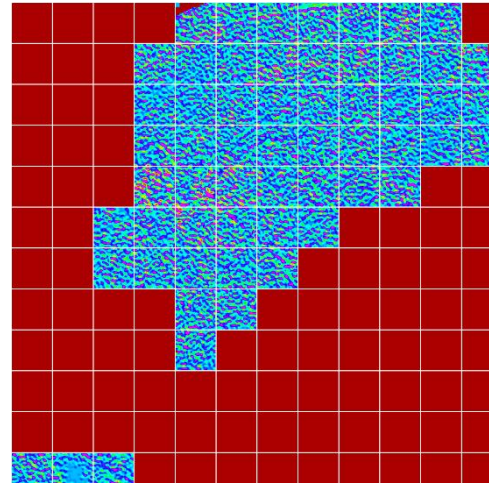


Figure C2.34b: Filtered data #2, rainbow

**C2.4. Relief Plot Display.** The virtual light source is at 30° elevation and 195° azimuth.

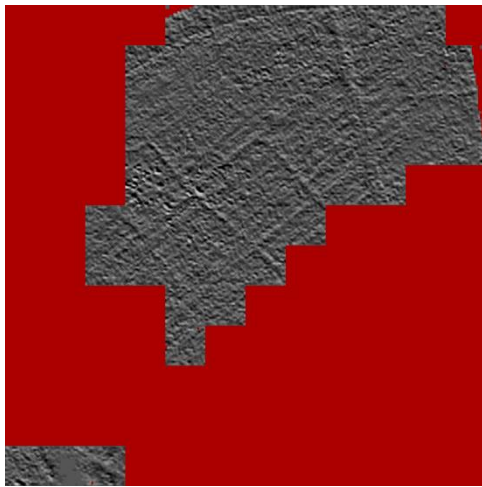


Figure C2.35a: Filtered data #1, greyscale

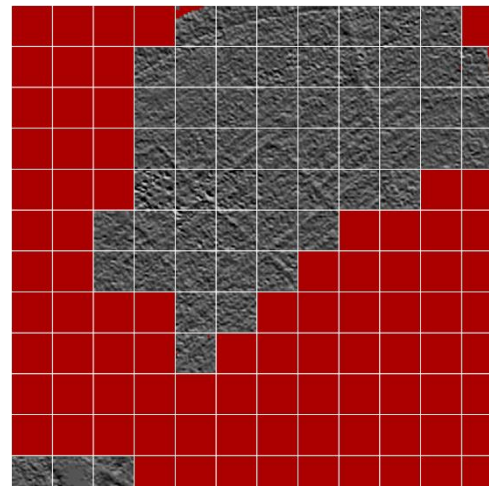


Figure C2.35b: Filtered data #1, greyscale

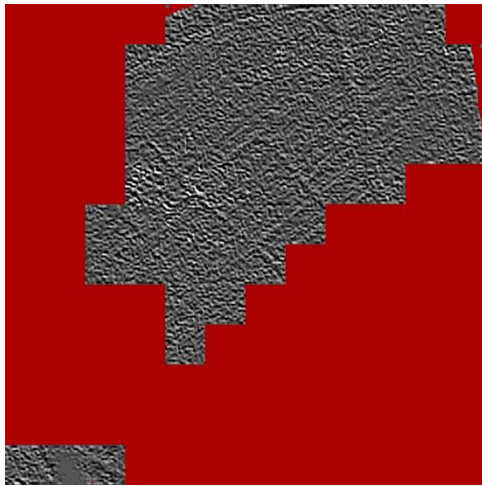


Figure C2.36a: Filtered data #2, greyscale

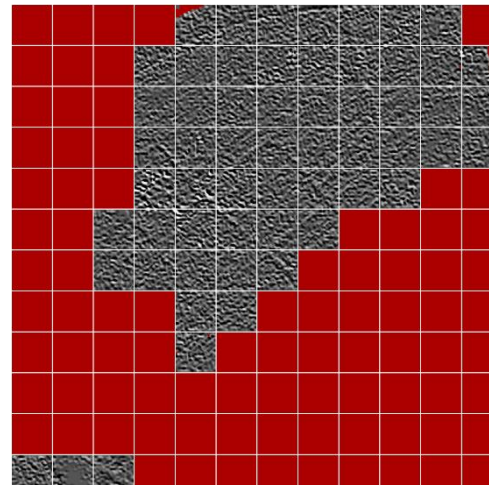


Figure C2.36b: Filtered data #2, greyscale

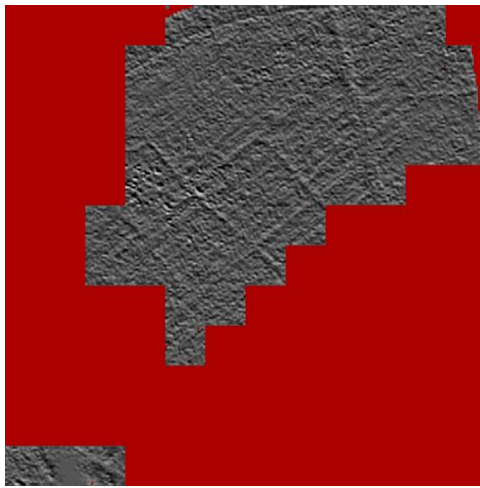


Figure C2.37a: Filtered data #1, ext greyscale

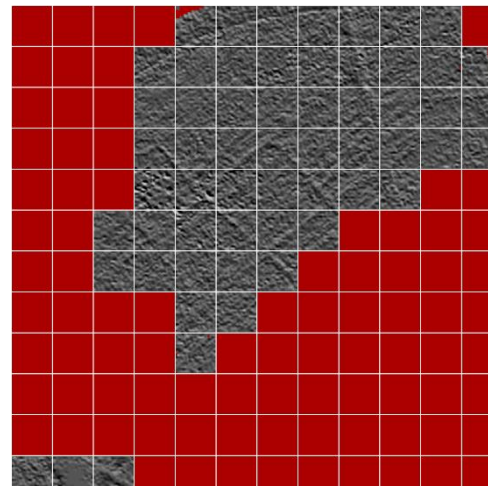


Figure C2.37b: Filtered data #1, ext greyscale

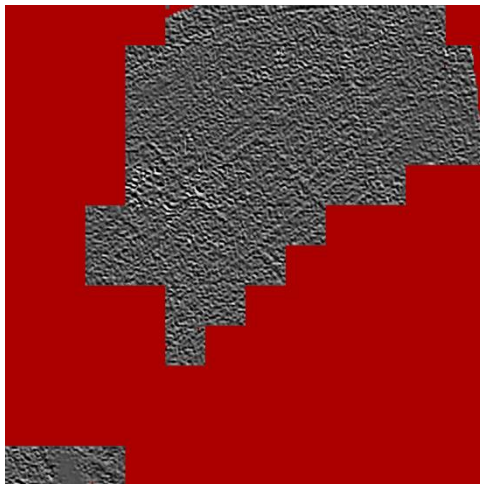


Figure C2.38a: Filtered data #2, ext greyscale

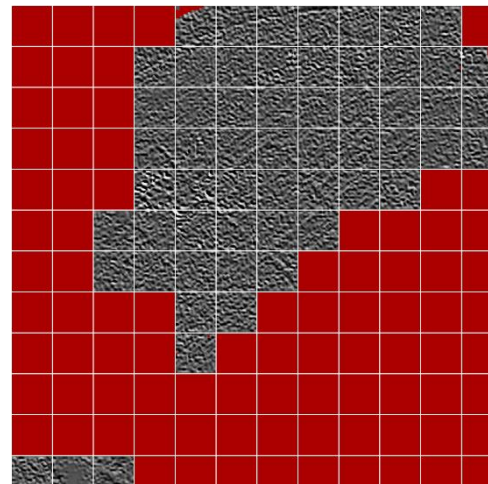


Figure C2.38b: Filtered data #2, ext greyscale

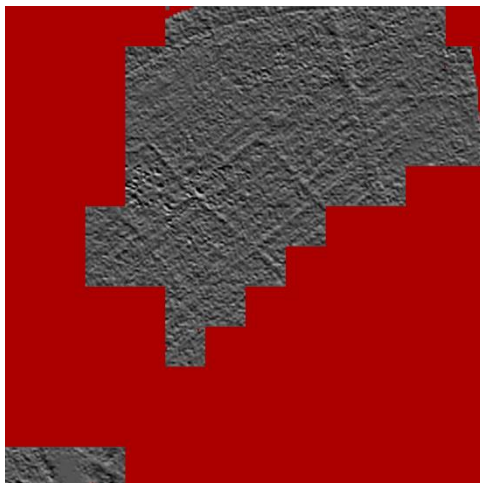


Figure C2.39a: Filtered data #1, greyscale 64

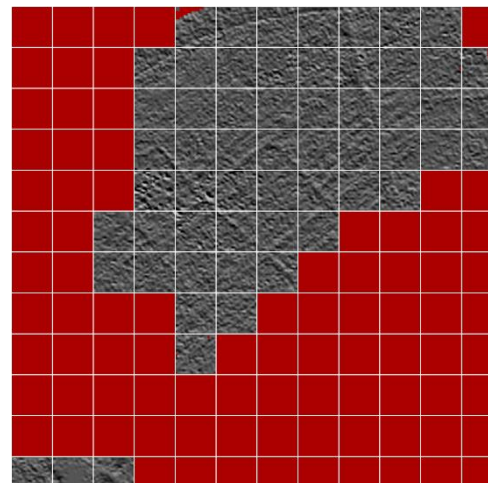


Figure C2.39b: Filtered data #1, greyscale 64



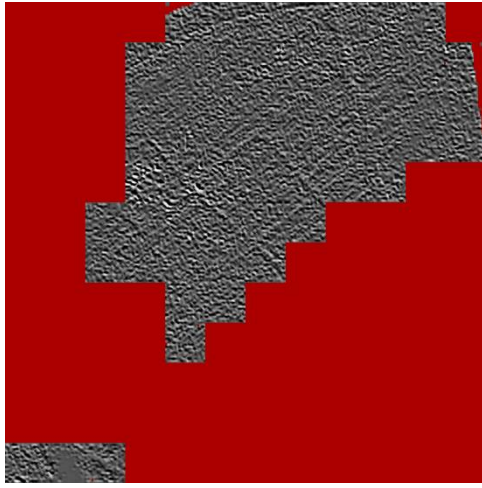


Figure C2.40a: Filtered data #2, greyscale 64

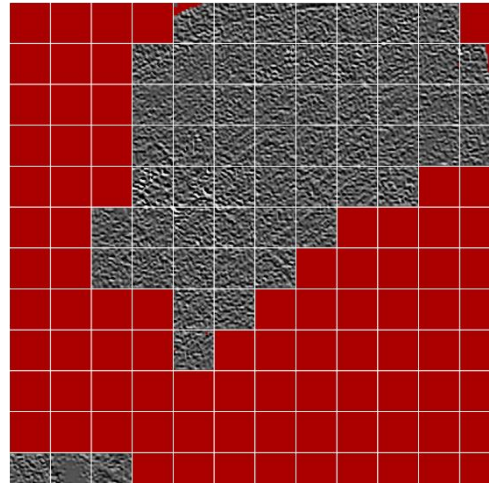


Figure C2.40b: Filtered data #2, greyscale 64

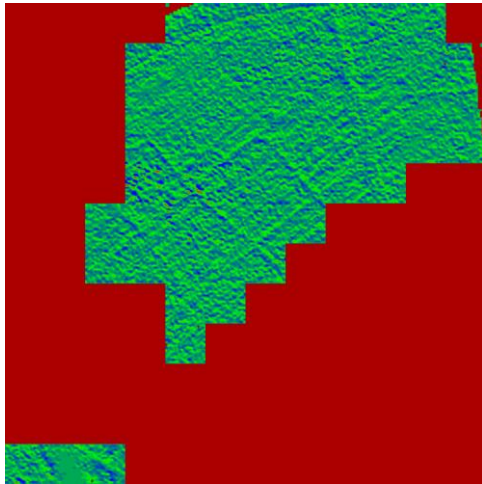


Figure C2.41a: Filtered data #1, RGB

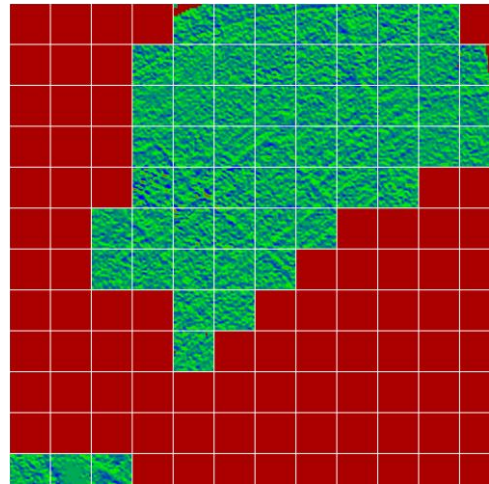


Figure C2.41b: Filtered data #1, RGB

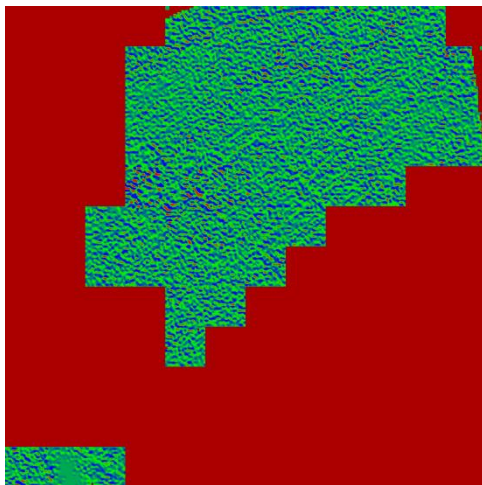


Figure C2.42a: Filtered data #2, RGB

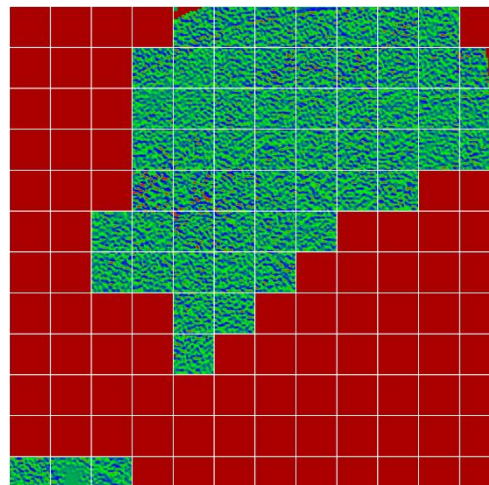


Figure C2.42b: Filtered data #2, RGB

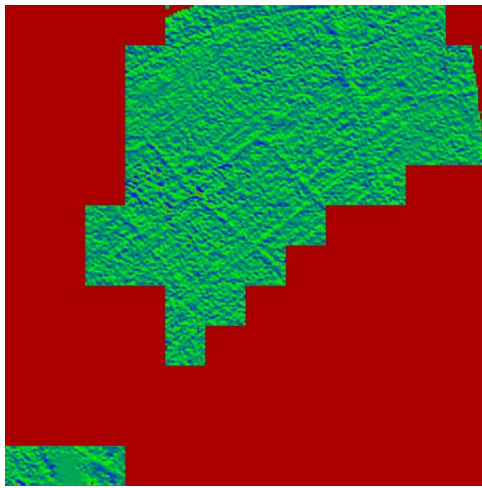


Figure C2.43a: Filtered data #1, ext RGB

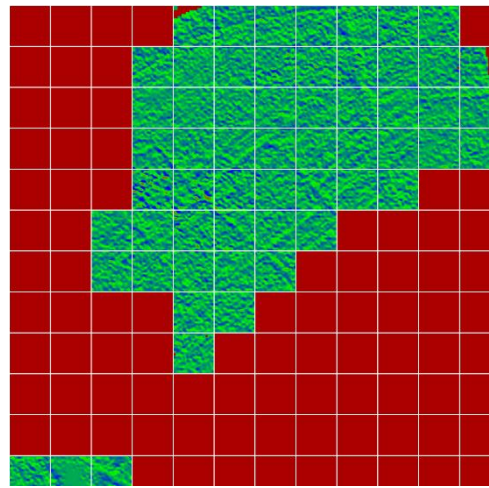


Figure C2.43b: Filtered data #1, ext RGB

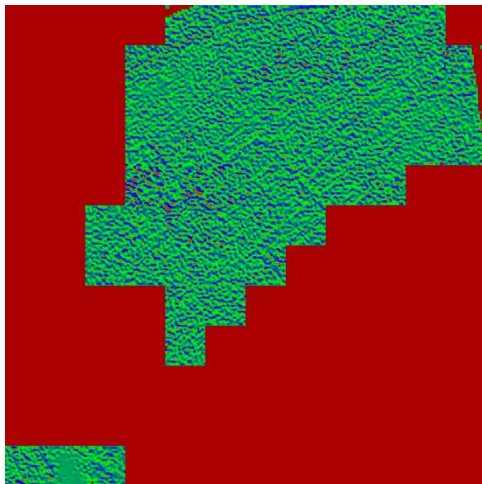


Figure C2.44a: Filtered data #2, ext RGB

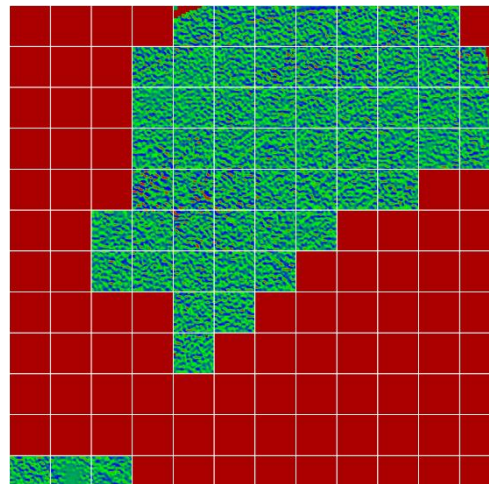


Figure C2.44b: Filtered data #2, ext RGB

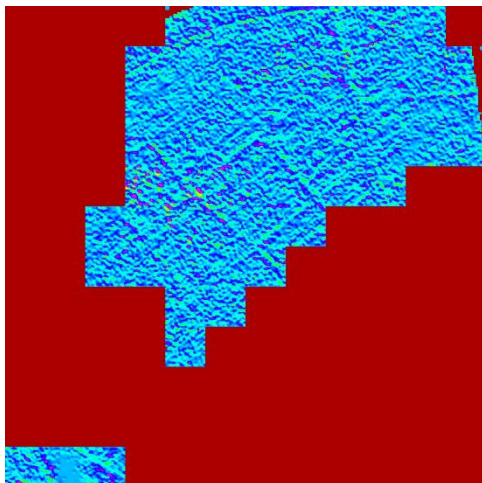


Figure C2.45a: Filtered data #1, rainbow

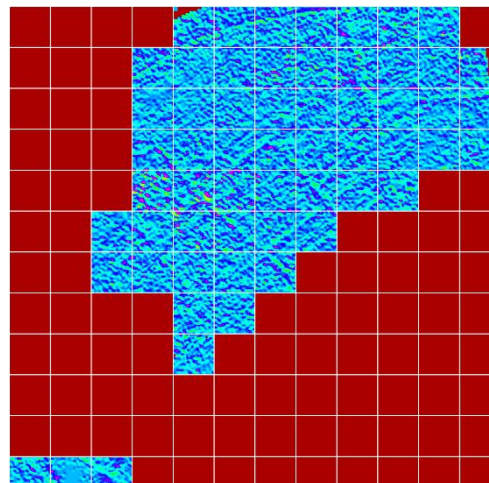


Figure C2.45b: Filtered data #1, rainbow



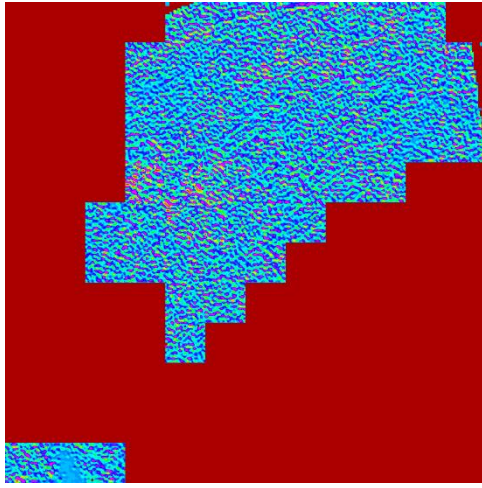


Figure C2.46a: Filtered data #2, rainbow

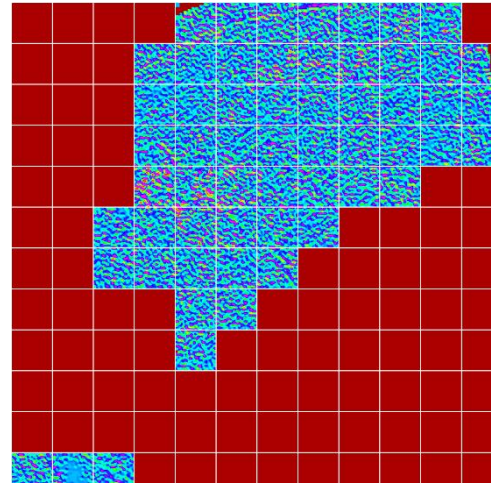


Figure C2.46b: Filtered data #2, rainbow