

ANNEX A - SITE GRID

A1. The Site Grid (Figure A1.1) comprises of a series of 20m x 20m survey squares, oriented with magnetic north. The cardinal lines are shown in red and are centred on the SBM. The black dashed line denotes boundaries between Site Grid Record Sheets. Four Grid Alignment Points, to help orientate the grid, are indicated in blue.

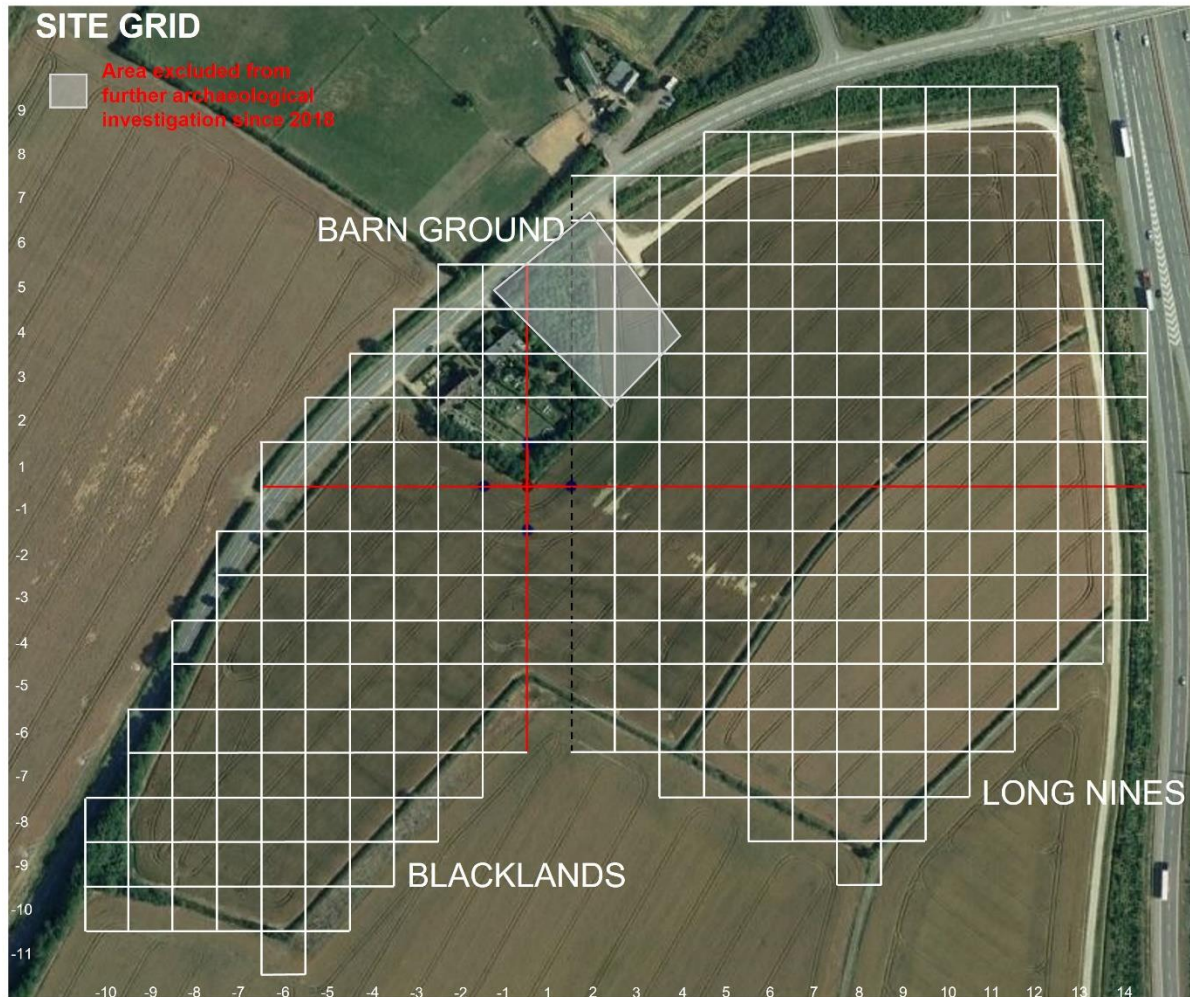


Figure A1.1: Site grid (Google Earth, 2016)

A2. A summary of surveys and excavations undertaken is recorded on the Site Survey Sheets at Appendix 1 to this Annex and Site Excavation Sheets at Appendix 2 to this Annex.

A3. The original grid reference is updated by revision 1 and is cross-referenced at Appendix 3.

Appendixes:

1. Site Survey Sheets.
2. Site Excavation Sheets.
3. Original and Revised Grid Cross-Reference.